

Design Criteria

Square Footage: 470 Sq. ft.
Occupancy load: 5 (Egress load)
Floor dead load: 18 PSF.
Floor live load: 50 PSF.
Roof dead load: 7 PSF.
Ground snow load: 40 PSF.
Roof snow load: 40 PSF.
Building Weight 12,000 LBS.

APPROVED FOR PRODUCTION

Armstrong Trailers
1244 Office
11'-9" x 40'-0"

FRAME - OUTRIGGER

MAIN I-BEAM: M10x8 I-Beam (ASTM A36) (Fy=36ksi)
CROSSMEMBER: ANGLE & ROD AND 13GA FORMED STEEL OUTRIGGER @ 48" O.C.
NOTE: SOLID REAR CROSSMEMBERS AND RECESSED TAIL LIGHTS
HITCH: DETACHABLE W/ 2 5/16" CUP AND JACK
AXLES: 2 W/ BRAKES, 6-MULTI-LEAF SPRINGS OVERSLUNG (SINGLE TANDEM)
NOTE: 75 1/2" SPRING CENTERS
MISC: 1 BARGEMAN PLUG
TIRES: 14-PLY
PAINT: MIN 3 MIL BLACK ASPHALT
TIE DOWNS: FRAME TIES, IF REQUIRED, ON SITE BY OTHERS

FLOOR - TRANSVERSE

BOTTOM BOARD: WOVEN PLASTIC INSULATION SUPPORT
NOTE: FASTEN TO BOTTOM OF JOIST 24" OC MAX
INSULATION: R-11 UNFACED FIBERGLASS
JOISTS: 2X6 #2 SPF EQUAL OR BETTER @ 16" O.C. (TRANSVERSE)
RIM JOIST: 2X6 #2 SPF EQUAL OR BETTER
DECKING: 5/8" (19/32") T&G DOUGLAS FIR PLYWOOD 16" O.C. MIN. SPAN INDEX
COVERING: 1/8" VINYL COMPOSITION TILE (CLASS A/1 F.S.)
(COLOR = #51839 FORTRESS WHITE)

EXTERIOR WALLS

STUDS: 2X4 STUD GRADE SPF EQUAL OR BETTER @ 16" O.C.
BOTTOM PLATE: SINGLE 2X4 #3 SPF EQUAL OR BETTER
TOP PLATE(S): SINGLE 2X4 #3 SPF EQUAL OR BETTER
WALL HEIGHT: 8'-0"
WALL COVERING: 1/4" NATURAL BIRCH PANELING (CLASS C/3 F.S.)
WALL COVERING: 1/4" VINYL COVERED PANELING (CLASS C/3 F.S.) END WALLS
(COLOR = HAMPTON GRAY)
INSULATION: R-11 UNFACED FIBERGLASS BATTS
SHEATHING: 3/8" OSB
SIDING: .019 SMOOTH ALUMINUM (COLOR = SMOOTH- COLONIAL WHITE)
NOTE: SCREW EVERY MESA
TRIM: .019 RCE ALUMINUM (TOP, BOTTOM AND CORNERS)
(COLOR = RCE- EARTH BROWN)
DO NOT INSTALL DEALER DECALS
MISC: ANSI CONSTRUCTION

INTERIOR WALLS

STUDS: 2X4 STUD GRADE SPF EQUAL OR BETTER @ 16" O.C.
BOTTOM PLATE: SINGLE 2X4 #3 SPF EQUAL OR BETTER
TOP PLATE(S): SINGLE 2X4 #3 SPF EQUAL OR BETTER
WALL HEIGHT: 8'-0"
WALL COVERING: 1/4" NATURAL BIRCH PANELING (CLASS C/3 F.S.)
TRIM: STANDARD WOOD PROFILES
TRIM: VINYL BATTENS AT TOP, VERTICAL SEAMS AND CORNERS
TRIM: 4" VINYL COVE BASE (COLOR = BLACK #P100)

ROOF

RAFTERS: BOW TRUSSES @ 16" O.C. W/40# LIVE LOAD
5 1/2" HEEL X 12 1/4" CROWN 11' - 6" LONG TRUSS#CS-120
CEILING PANEL: 1/2" PREFINISHED GYPSUM W/VAPOR BARRIER (CLASS A/1 F.S.)
INSULATION: R-11 INSULATION
SHEATHING: 3/8" OSB
ROOFING: 30 GA GALVANIZED STEEL (CLASS C/3 F.S.)
GUTTERS: K-60 J-RAIL

EXTERIOR DOORS

A: 2 36X80 ELIXER VINYL CLAD DOOR W/ALUM. FRAME, 10X10 SAFETY GLAZED LITE, LOCKWARE # 5401 KNOB LOCK SET, DRIP CAP, WEATHER STRIPPING, STAY-CHAIN, LATCH GUARD AND THRESHOLD. (COLOR = IVORY)

INTERIOR DOORS

B: 1 36X80 PREFINISHED (IMPERIAL OAK / EQUAL) HOLLOW CORE WOOD DOOR W/ BUTTERFLY HINGES, PANEL JAMBS
HARDWARE: 1 FAS-TEC PASSAGE #DL22-SS KNOB SET US32D GRADE 3

WINDOWS

1: 3 46X27 HORIZONTAL SLIDER W/SINGLE CLEAR GLASS, ALUM. EXTRUDED MILL FINISH FRAME, BUG SCREEN AND SELF STORING STORMS (WHITE FRAME)
2: 4 30X27 HORIZONTAL SLIDER W/SINGLE CLEAR GLASS, ALUM. EXTRUDED MILL FINISH FRAME, BUG SCREEN AND SELF STORING STORMS (WHITE FRAME)

ELECTRICAL

NOTE: ALL ELECTRICAL TO MEET CSA STANDARDS
SERVICE: 120/240V SINGLE PHASE, 3 WIRE, 60HZ W/GROUND
LOAD CENTER: 1 24 CIRCUIT WITH MAIN 100AMP BREAKER CQ0124M125C100
NOTE: CSA HEIGHT TO BE 36" TO BOTTOM.
RACEWAY: MIN. #14 AWG NM UP TO 40A. > 40A IN SE TYPE WIRE. (CSA)
ENTRANCE: 1 1/2" EMT CONDUIT STUB THRU SIDEWALL
LIGHTS: 5 4' 2 32W T8-TUBE FLUOR. W/DIFFUSER & ELECTRONIC BALLAST W/LUMINAIR DISCT. (SB 232 120 RE)
NOTE: CSA, ALL SWITCHES AND RECEPT TO BE GROUND TO BOX
RECEPTACLES: 7 120V 15A IVORY DUPLEX GROUNDING TYPE # 5320ICP
RECEPTACLES: 2 120V 20A IVORY SINGLE GROUNDING TYPE A/C RECEPT
SWITCHES: 2 120V 15 AMP IVORY TOGGLE TYPE #CSB115I
MISC: 2 2x4 WALL MTD. J-BOXES W/ 1/2" CONDUIT STUBBED BELOW FLOOR

HVAC

HEATING: 5 6' 1.5KW 120 VOLT BASEBOARD HEATER #2516
THERMOSTAT: 5 120V WALL MOUNT #MS26
COOLING: 2 5,000 BTU 120v THRU-WALL AIR CONDITIONER (PERFECT AIRE PAC 5000) W/ 20A IVORY SINGLE GROUNDING TYPE A/C RECEPT # 5801I

SPECIALTIES

EXTINGUISHER: IF REQUIRED BY OTHERS AT SITE
MISC:

Building Notes:

- All materials are C and B Custom Modular's standards unless otherwise specified.
- All door adjustments are on site by others.
- C and B Custom Modular Inc. is not responsible for local codes or permits.
- Construction type trailer

VIN#

16-19575 = RP9FT4026HA028001
16-19630 = RP9FT4028HA028002

Drawing Index

Page	Page Description
C1	Building Specifications
A1	Building Elevations
A2	Production / Electrical Floor Plan

ID	Revision	Date

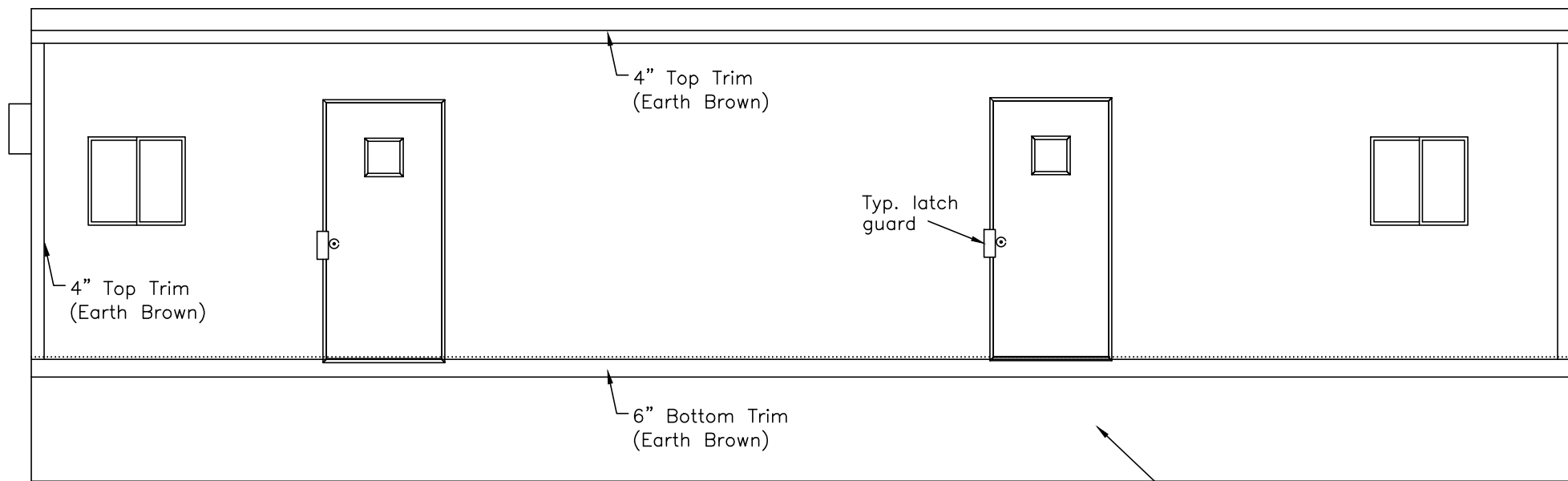
Scale: N/A	Drawn: Becky B.	Date: 12/7/16	Plot Date: Dec 12, 2016
Serial Numbers: 16-19575 & 16-19630	Drawing Number: 1584	DWG File Name: 16-19575_19630.dwg	
Approval Numbers: QPS Electric	Sales Representative: Lewis Chadwick		



2224 Bloomingdale Drive
Bristol, Indiana 46507
PH: (574) 848-7300
FX: (574) 848-1950

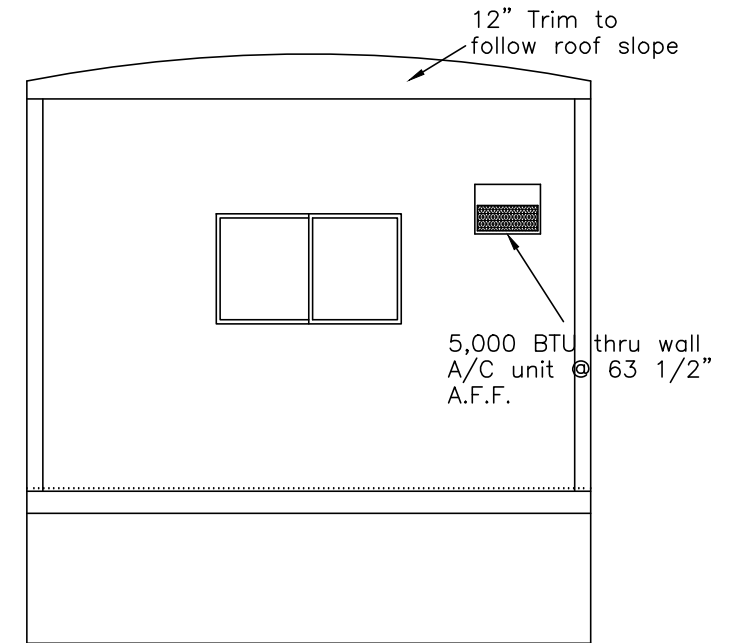
C
U
S
T
O
M
O
M
O
D
U
L
A
R
I
N
C.

Title: Armstrong Trailers 1244 Office (11'-9" x 40'-0")	
Sheet Description: Building Cover Sheet	Page #: C1

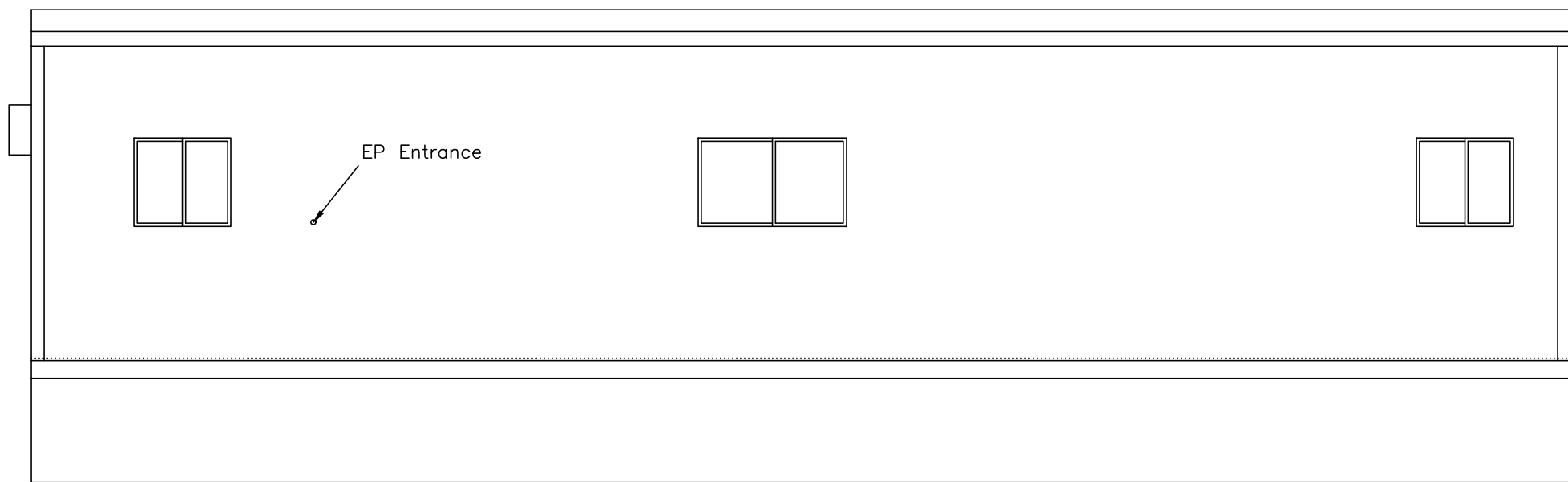


Elevation A

Skirting supplied and installed by others on site

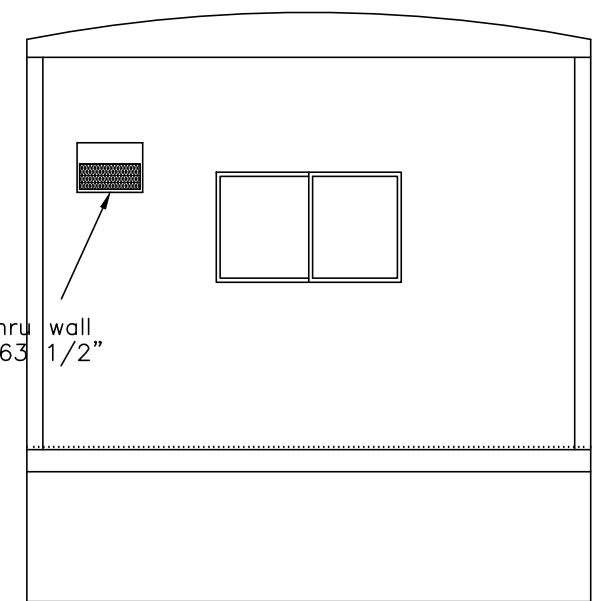


Elevation B



Elevation C

12'-4 5/8" Shipping Height



Elevation D

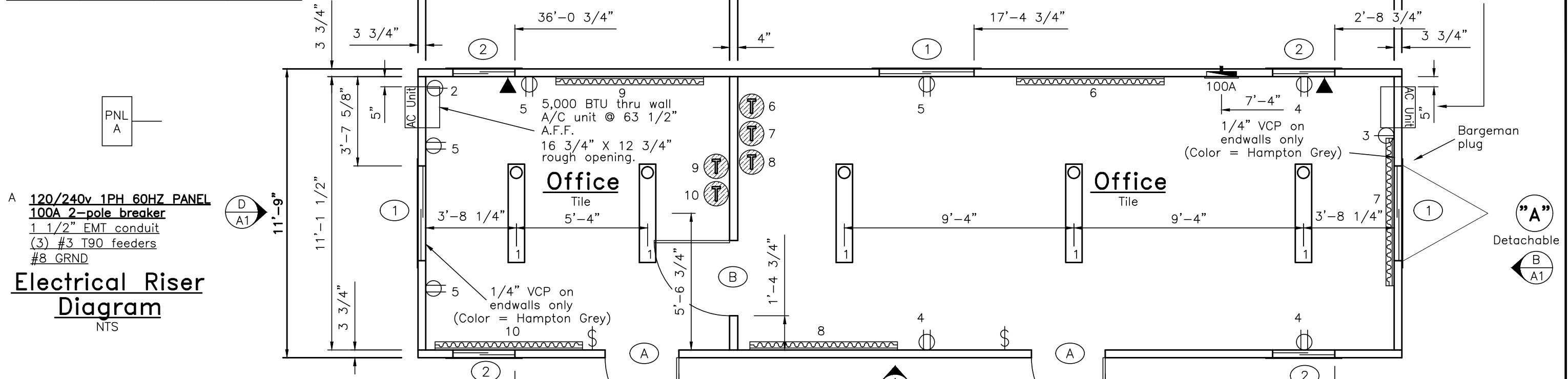
ARMSTRONG
 Manufactured Homes - Office Trailers

CUSTOMER
 C & B
 MODULAR, INC.
 2224 Bloomingdale Drive
 Bristol, Indiana 46507
 PH: (574) 848-7300
 FX: (574) 848-1950

ID	Revision	Date
Scale: Noted	Drawn: Becky B.	Date: 12/7/16
Plot Date: Dec 12, 2016	Serial Numbers: 16-19575 & 16-19630	Drawing Number: 1584
Approval Numbers: QPS Electric	DWG File Name: 16-19575_19630.dwg	Sales Representative: Lewis Chadwick
Title: Armstrong Trailers 1244 Office (11'-9" x 40'-0")		
Sheet Description: Building Elevations		Page #: A1

Wire Size Chart (90° C)

Breaker Size	Wire Size	Breaker Size	Wire Size
15A	#14	80A	#4
20A	#12	90A	#3
30A	#10	100A	#3
40A	#8	115A	#2
50A	#6	130A	#1
60A	#6	150A	1/0



A 120/240v 1PH 60HZ PANEL
 100A 2-pole breaker
 1 1/2" EMT conduit
 (3) #3 T90 feeders
 #8 GRND

Electrical Riser Diagram
 NTS

DRAWING LEGEND		
SYMBOL	QTY.	DESCRIPTION
	1	120/240 electric panel (+36" AFF to bottom of panel)
	5	Wall mtd 120V thermostat (+48" AFF to top)
	7	120V ivory duplex grounding type (+18" AFF unless noted)
	2	120V ivory toggle type (+42" AFF unless noted)
	5	120V 4' (2) tube surface mount w/diffuser
	5	120V 1.5KW Electric 72" Baseboard heater (+4" A.F.F.)
	2	120V 20A ivory single grounding type A/C recept (+54" AFF unless noted)
	2	2x4-jbox w/blank cover and 1/2" conduit thru floor for phone/data. (+18" AFF unless noted)

Modul	A	Area Served Sq. Meter	Area served	470 ft	Panel Voltage	240			
		43.664288 ft	Main Breaker	100A	Panel Phase	1			
CKT#	Breaker size	Description	QTY	Voltage	Wattage per item	Connected Load	Load Factor	Calculated load	Total
1	15 /1	Lights (2-tube)	5	120	71.2	356	1.25	445	
		Exterior Lights	0	120	75	0	1.25	0	445
2	20 /1	A/C Recept	1	120	515	515	1.00	515	515
3	20 /1	A/C Recept	1	120	515	515	1.00	515	515
4	15 /1	Recepts	3	120	180	540	1.00	540	540
5	15 /1	Recepts	4	120	180	720	1.00	720	720
6	20 /1	Baseboard Heater	1	120	1500	1500	1.25	1875	1875
7	20 /1	Baseboard Heater	1	120	1500	1500	1.25	1875	1875
8	20 /1	Baseboard Heater	1	120	1500	1500	1.25	1875	1875
9	20 /1	Baseboard Heater	1	120	1500	1500	1.25	1875	1875
10	20 /1	Baseboard Heater	1	120	1500	1500	1.25	1875	1875
Total connected load								12110.00	
Total connected load amps								50.46	
Load factor								50	2183.22
Appliance Load								10405.00	
CEC 2012 Elec Load Amps								52.45	

DOOR, WINDOW AND OPENING SCHEDULE			
SYMBOL	QTY.	DESCRIPTION	ROUGH OPENING
A	2	Door: 36x80 Elixer vinyl clad w/ 10x10 S.G. light Handle: Lockware 5401 Knob Other: Drip cap, threshold, weather stripping, stay chain, latchguard Frame: Aluminum Closer:	36 x 80
B	1	Door: 36x80 prefinished hollow core wood door Handle: FAS-TEC PASSAGE #DL22-SS KNOB SET US32D Other: Butterfly hinge Frame: Panel Jambas Closer:	36 3/4" x 81 3/4"
1	3	Window: 46x27 horizontal slider w/ single clear glass Frame: Aluminum (Mill Finish) Acc. bug screen, Self storing storm window with white frame	46 1/2" x 27 1/4" up 41 1/4" A.F.F.
2	4	Window: 30x27 horizontal slider w/ single clear glass Frame: Aluminum (Mill Finish) Acc. bug screen, Self storing storm window with white frame	30 1/2" x 27 1/4" up 41 1/4" A.F.F.



2224 Bloomingdale Drive
 Bristol, Indiana 46507
 PH: (574) 848-7300
 FX: (574) 848-1950

CUSTOMER MODULAR, INC.

ID	Revision	Date

Scale: 1/4" = 1'-0"
 Drawn: Becky B.
 Date: 12/7/16
 Plot Date: Dec 12, 2016

Serial Numbers: 16-19575 & 16-19575
 Drawing Number: 1584
 DWG File Name: 16-19575_19630.dwg

Approval Numbers: QPS Electric
 Sales Representative: Lewis Chadwick

Title: Armstrong Trailres
 1244 Office (11'-9" x 40'-0")

Sheet Description: Production / Electrical Floor Plan
 Page #: A2