

Design Criteria

Square Footage: 399.5 Sq. ft.
 Occpancy load: 4 (Egress load)
 Floor dead load: 23 PSF.
 Floor live load: 50 PSF.
 Roof dead load: 9 PSF.
 Ground snow load: 40 PSF.
 Roof snow load: 40 PSF.
 Building Weight 13,000 LBS.

VIN# = RP9FT3421GA028020

APPROVED FOR PRODUCTION

Armstrong Trailers
 12 x 38 Office
 11'-9" x 34'-0" Box Size

FRAME - OUTRIGGER

MAIN I-BEAM: M10X8 I-BEAM (ASTM A36) (FY=36KSI)
 CROSSMEMBER: ANGLE & ROD AND 13GA FORMED STEEL OUTRIGGER @ 48" O.C.
 NOTE: SOLID REAR CROSSMEMBERS AND RECESSED TAIL LIGHTS
 HITCH: DETACHABLE W/ 2 5/16" CUP AND JACK
 AXLES: 2 W/BRAKES, 6-MULTI-LEAF SPRINGS OVERSLUNG (SINGLE TANDEM)
 NOTE: 75 1/2" SPRING CENTERS
 TIRES: 14-PLY
 PAINT: MIN 3 MIL BLACK ASPHALT
 TIE DOWNS: FRAME TIES, IF REQUIRED, ON SITE BY OTHERS

FLOOR - TRANSVERSE

BOTTOM BOARD: WOVEN PLASTIC INSULATION SUPPORT
 NOTE: FASTENED TO BOTTOM OF JOISTS 24" O.C. MAX
 INSULATION: CSA R-20 UNFACED FIBERGLASS
 JOISTS: 2X6 #2 SPF EQUAL OR BETTER @ 16" O.C. (TRANSVERSE)
 RIM JOIST: 2X6 #2 SPF EQUAL OR BETTER
 DECKING: 1ST LAYER 5/8" T&G PLYWOOD 16" O.C. MIN. SPAN INDEX
 COVERING: 1/8" VINYL COMPOSITION TILE (CLASS A/1 F.S.)
 (COLOR = #51839 FORTRESS WHITE)

EXTERIOR WALLS

STUDS: 2X6 STUD GRADE SPF EQUAL OR BETTER @ 16" O.C.
 BOTTOM PLATE: SINGLE 2X6 #3 SPF EQUAL OR BETTER
 TOP PLATE(S): DOUBLE 2X6 #3 SPF EQUAL OR BETTER
 WALL HEIGHT: 8'-0"
 WALL COVERING: 1/2" VCG (CLASS A/1 F.S.)
 (COLOR = HAMPTON GRAY)
 INSULATION: CSA R-20 UNFACED FIBERGLASS BATTS
 SHEATHING: HOUSEWRAP UNDER SIDING
 SIDING: 7/16" SMART PANEL WOOD SIDING WITH GROOVES EVERY 4" O.C.
 (COLOR = NAVAJO WHITE)
 TRIM: 1X4 TOP (SIDES), CORNERS, DOORS AND WINDOWS
 TRIM: 1X6 BOTTOM & TOP (ENDS)
 (COLOR = CHOCOLATE)
 SKIRTING: SKIRTING SUPPLIED AND INSTALLED ON SITE BY OTHERS

INTERIOR WALLS

STUDS: 2X4 STUD GRADE SPF EQUAL OR BETTER @ 16" O.C.
 BOTTOM PLATE: SINGLE 2X4 #3 SPF EQUAL OR BETTER
 TOP PLATE(S): DOUBLE 2X4 #3 SPF EQUAL OR BETTER
 WALL HEIGHT: 8'-0"
 WALL COVERING: 1/2" VCG (CLASS A/1 F.S.)
 TRIM: WHITE MESA OAK WOOD PROFILES @ WINDOWS AND DOORS
 TRIM: VINYL BATTENS AT TOP, VERTICAL SEAMS, INSIDE AND OUTSIDE CORNERS
 TRIM: 4" VINYL COVE BASE (COLOR = #P140 FAWN)

ROOF

RAFTERS: LOW PROFILE BOW TRUSSES @ 16" O.C. W/40# LIVE LOAD
 12" HEEL X 14" CROWN 11' - 6" LONG TRUSS#T8595421
 MANSARD: 18" HIGH SMART PANEL W/GROOVES TO MATCH SIDING.
 (COLOR = CHOCOLATE)
 OVERHANGS: 12" PROJECTION FULL PERIMETER ENDS WITH CAN LIGHTS
 NOTE: USE END TRUSSES FOR OVERHANG TRUSS #T8595422
 CEILING PANEL: 1/2" PREFINISHED GYPSUM W/VAPOR BARRIER (CLASS A/1 F.S.)
 INSULATION: CSA R-22 INSULATION
 SHEATHING: 7/16" OSB 16/0 SPAN INDEX
 ROOFING: .045 BLACK EPDM RUBBER ROOF FULLY ADHERED
 GUTTERS: K-60 J-RAIL

EXTERIOR DOORS

A: 1 36X80 TELL 20 GA INS/STEEL DOOR W/18 GA STEEL TELL JAMBS, 22X64
 15 SAFETY GLAZED LITE, TELL DRIP CAP, WEATHER STRIPPING, STD THRESHOLD
 (U=. 57 SHGC=. 32)(COLOR = NAVAJO WHITE)
 HARDWARE: 1 TELL CLOSER #12641BC PA AL
 HARDWARE: 1 TELL DEADBOLT #DB2051 US32 SINGLE CYLINDER, GRADE 2
 HARDWARE: 1 TELL #KC2381 EMP 32D KEYED KNOB, GRADE 2

INTERIOR DOORS

B: 1 36X80 PREFINISHED EMBOSSED HOLLOW CORE SNOW WHITE DOOR
 W/ BALL BEARING HINGES, WHITE PINE JAMBS, FLOOR MOUNT DOOR STOP
 HARDWARE: 1 FAS-TEC PASSAGE #DL22-SS KNOB SET US32D GRADE 3

WINDOWS

1: 5 WIN-TECH G70 48X48 HORIZONTAL SLIDER W/DIG W/LOW E COATING,
 WHITE VINYL FRAME, DRIP CAP AND BUG SCREEN (U=. 34 SHGC =. 25)
 BLINDS: 5 1" ALUMINUM MINIBLINDS (COLOR = ALABASTER)

ELECTRICAL

NOTE: ALL ELECTRICAL TO MEET CSA STANDARDS
 SERVICE: 120/240V SINGLE PHASE, 3 WIRE, 60HZ W/GROUND
 LOAD CENTER: 1 24 CIRCUIT WITH MAIN 100AMP BREAKER CQ0124M125C100
 NOTE: CSA HEIGHT TO BE 36" TO BOTTOM.
 ENTRANCE: 1 1/2" EMT CONDUIT STUB THRU FLOOR
 RACEWAY: MIN. #14 AWG NM UP TO 40A. > 40A IN SE TYPE WIRE.(CSA)
 LIGHTS: 5 4' 2 32W T8-TUBE FLUOR. W/DIFFUSER & ELECTRONIC BALLAST
 W/LUMINAIR DISCT. (SB 232 120 RE)
 EXTERIOR LIGHT 1 75W WEATHERPROOF EXTERIOR LIGHTS #VR1
 LIGHTS: 4 INCANDESCENT 6" CAN LIGHT #L7X WITH WHITE OPEN TRIM #6H20 TOR U
 WEATHER PROOF RECESSED IN OVERHANG
 NOTE: CSA RECEPTS AND SWITCHES TO BE GROUNDED TO BOX
 RECEPTACLES: 8 120V 15A IVORY DUPLEX GROUNDING TYPE (# 5320ICP)
 RECEPTACLES: 2 SEE COOLING CALL OUT FOR A/C RECEPT REQUIREMENTS
 SWITCHES: 3 120V 15 AMP IVORY TOGGLE TYPE #CSB115I
 MISC: 3 2X4 EMPTY J-BOXES W/ COVER AND 1/2" CONDUIT STUBBED THRU FLOOR
 FOR PHONE/DATA (SYSTEMS TO BE INSTALLED ON SITE BY OTHERS)

HVAC

COOLING: 2 5000 BTU 120V THRU-WALL AIR CONDITIONER (PERFECT AIR PAC 5,000)
 W/ 20A IVORY SINGLE GROUNDING TYPE A/C RECEPT (# 5801I)
 HEATING: 5 6' 1.5KW 120 VOLT BASEBOARD HEATER
 THERMOSTAT 5 120V WALL MOUNT #MS26

SPECIALTIES

EXTINGUISHER: IF REQUIRED, ON SITE BY OTHERS

Building Notes:

- All materials are C and B Custom Modular's standards unless otherwise specified.
- All door adjustments are on site by others.
- C and B Custom Modular Inc. is not responsible for local codes or permits.
- Construction type trailer

Drawing Index

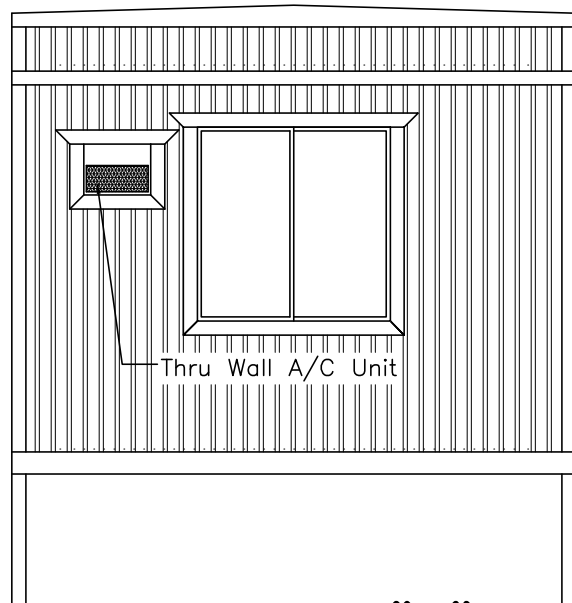
Page	Page Description
C1	Project Cover Sheet
A1	Building Elevations
A2	Production Floor Plan
E1	Production Electrical Plan
S1	Blocking Points / Details
S2	Cross Section / Details
S3-S5	Production Frame, Floor and Roof Framing Plans

ID	Revision	Date

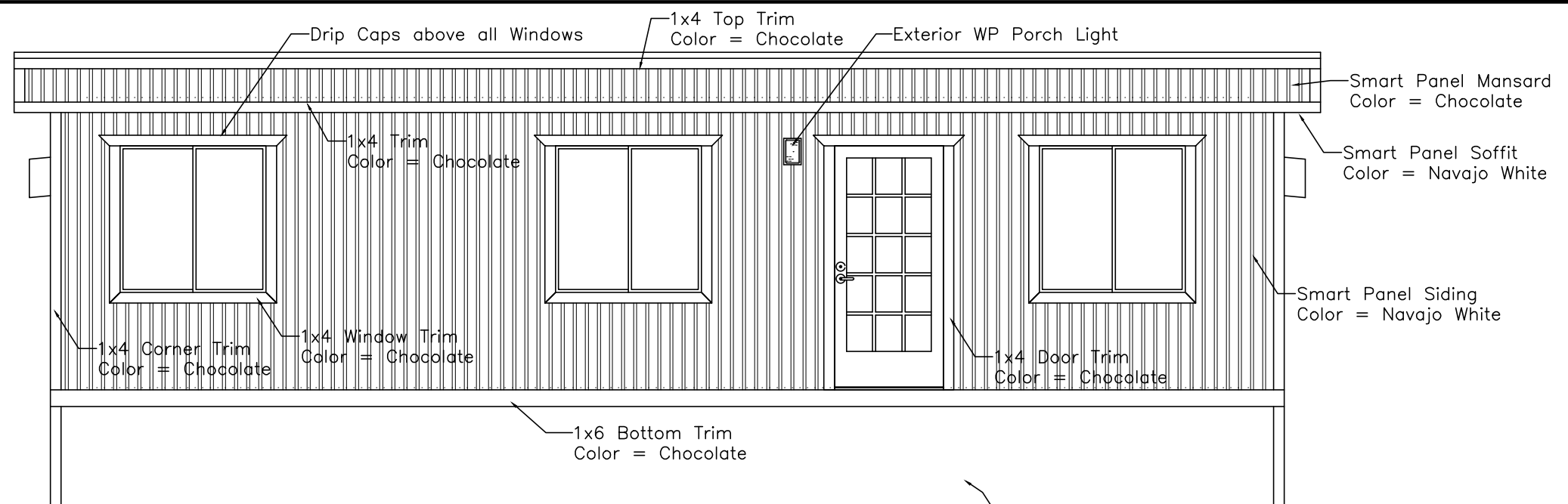


2224 Bloomingdale Drive
 Bristol, Indiana 46507
 PH: (574) 848-7300
 FX: (574) 848-1950
 C & B
 MODULAR, INC.

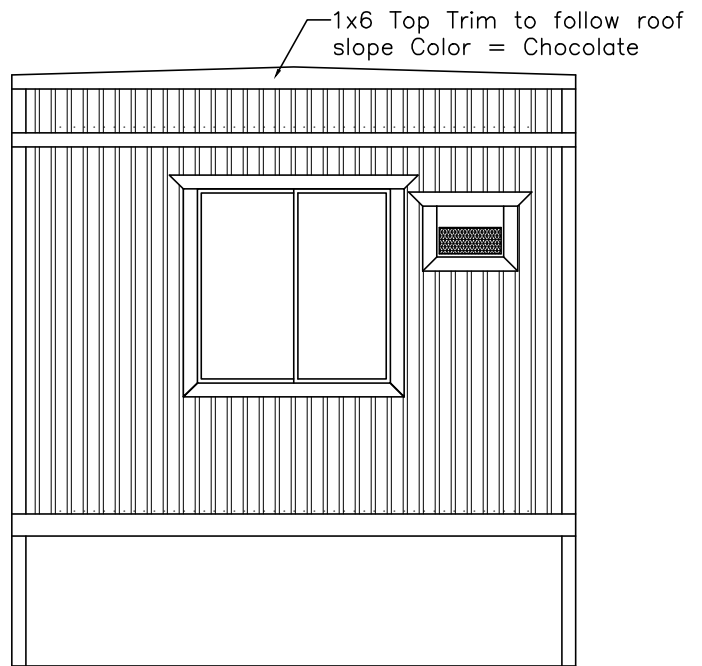
Scale: N/A	Drawn: Becky B.	Date: 5/10/16	Plot Date: May 26, 2016
Serial Numbers: 16-19395	Drawing Number: 1955	DWG File Name: 16-19395.dwg	
Approval Numbers: QPS-Electrical		Sales Representative: Lewis Chadwick	
Title: Armstrong Trailers 12 x 38 Office (11'-9" x 34'-0")			
Sheet Description: Building Cover Sheet			Page #: C1



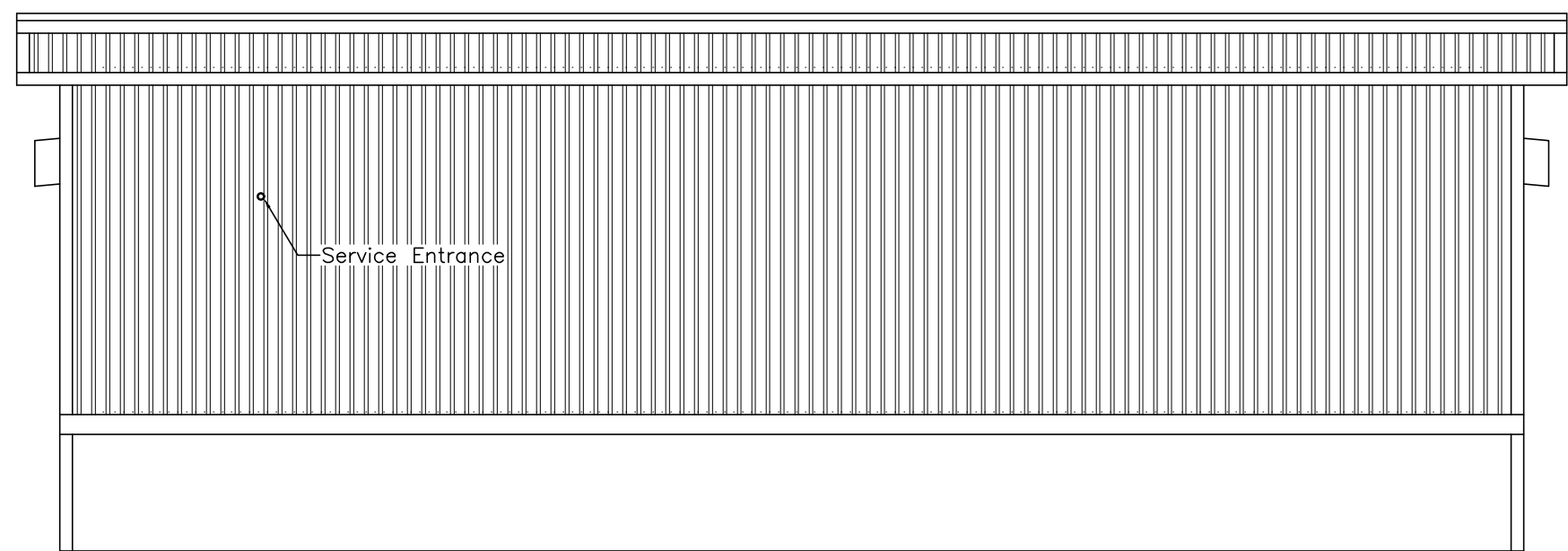
Elevation "D"



Elevation "A"



Elevation "B"



Elevation "C"

Skirting Supplied and Installed by others at site

ARMSTRONG
 Manufactured Homes - Office Trailers

C
U
S
T
O
M
O
M
O
D
U
L
A
R
I
N
C.
 2224 Bloomingdale Drive
 Bristol, Indiana 46507
 PH: (574) 848-7300
 FX: (574) 848-1950

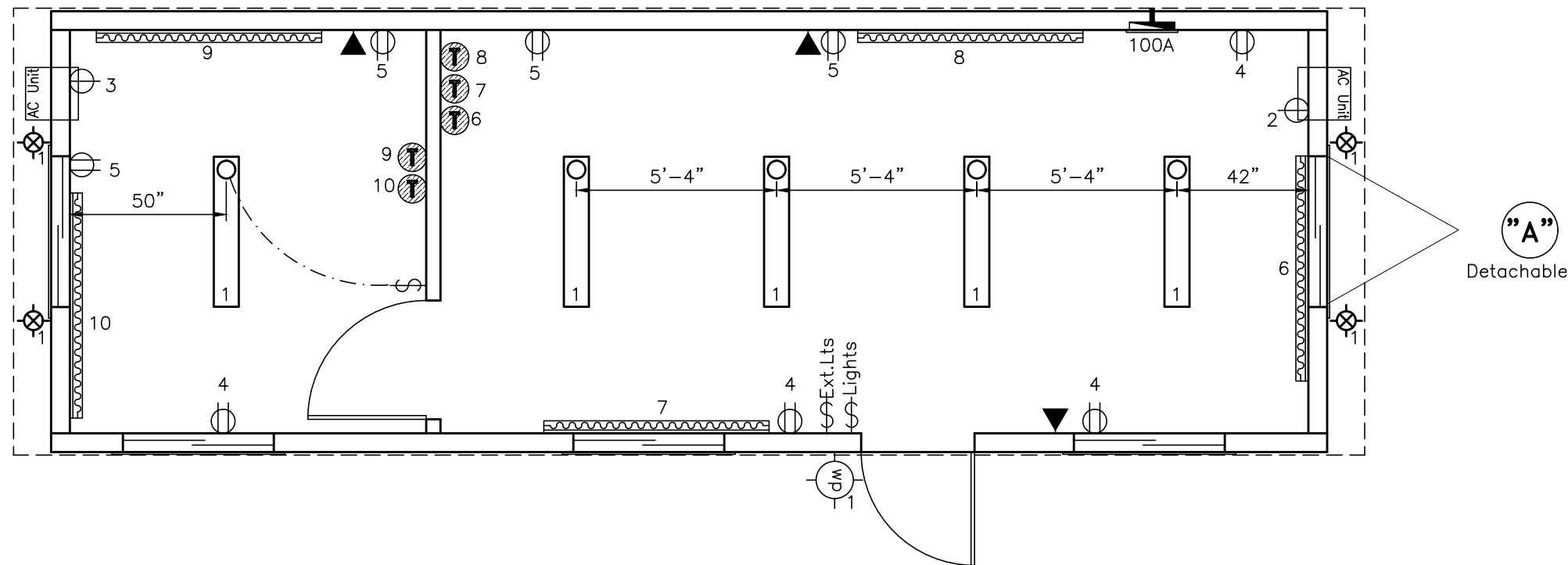
ID	Revision	Date
Scale: Noted	Drawn: Becky B.	Date: 5/10/16
Serial Numbers: 16-19395	Drawing Number: 1955	Plot Date: May 26, 2016
Approval Numbers: QPS-Electrical	DWG File Name: 16-19395.dwg	Sales Representative: Lewis Chadwick
Title: Armstrong Trailers 12 x 38 Office (11'-9" x 34'-0")		
Sheet Description: Building Elevations		Page #: A1

DRAWING LEGEND

SYMBOL	QTY.	DESCRIPTION
	1	120/240 electric panel (+36" AFF to bottom of panel)
	5	120V thermostat (+48" AFF to top)
	5	120V 1.5KW Electric 72" Baseboard heater (+4" A.F.F.)
	8	120V ivory duplex grounding type (+18" AFF unless noted)
	2	120V ivory single A/C Recept (+54" AFF unless noted)
	3	2x4-jbox w/blank cover and 1/2" conduit thru floor for phone/data. (+18" AFF unless noted)
	3	120V ivory toggle type (+42" AFF unless noted)
	5	120V 4' (2) tube surface mount w/diffuser
	4	120v recessed 6" incan light (IC rated) wp
	1	120v exterior weatherproof porch light (+74" AFF unless noted)

Wire Size Chart (90° C)

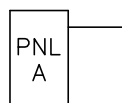
Breaker Size	Wire Size	Breaker Size	Wire Size
15A	#14	80A	#4
20A	#12	90A	#3
30A	#10	100A	#3
40A	#8	115A	#2
50A	#6	130A	#1
60A	#6	150A	1/0



Modul A Area Served Sq. Meter 37.11476448 ft Area served 399.5 ft Main Breaker 100A Panel Voltage 240 Panel Phase 1

CKT#	Breaker size	Description	QTY	Voltage	Wattage per item	Connected Load	Load Factor	Calculated load	Total
1	15 /1	Lights (2-tube)	5	120	71.2	356	1.25	445	
		Can Lights	4	120	75	300	1.25	375	
		Exterior Lights	1	120	75	75	1.25	93.75	913.75
2	20 /1	A/C Recept	1	120	515	515	1.00	515	515
3	20 /1	A/C Recept	1	120	515	515	1.00	515	515
4	15 /1	Recepts	4	120	180	720	1.00	720	720
5	15 /1	Recepts	4	120	180	720	1.00	720	720
6	20 /1	Baseboard Heater	1	120	1500	1500	1.25	1875	1875
7	20 /1	Baseboard Heater	1	120	1500	1500	1.25	1875	1875
8	20 /1	Baseboard Heater	1	120	1500	1500	1.25	1875	1875
9	20 /1	Baseboard Heater	1	120	1500	1500	1.25	1875	1875
10	20 /1	Baseboard Heater	1	120	1500	1500	1.25	1875	1875

Total connected load	12758.75
Total connected load amps	53.16
Load factor	50 1855.74
Appliance Load	10405.00
CEC 2012 Elec Load Amps	51.09



A 120/240v 1PH 60HZ PANEL
100A 2-pole breaker
 1 1/2" EMT conduit
 (3) #3 T90 feeders
 #8 GRND

Electrical Riser Diagram

NTS

ARMSTRONG
 Manufactured Homes - Office Trailers

2224 Bloomingdale Drive
 Bristol, Indiana 46507
 PH: (574) 848-7300
 FX: (574) 848-1950

C & B
 MODULAR, INC.

ID	Revision	Date
Scale: 1/4" = 1'-0"	Drawn: Becky B.	Date: 5/10/16
Serial Numbers: 16-19395	Drawing Number: 1955	DWG File Name: 16-19395.dwg
Approval Numbers: QPS-Electrical	Sales Representative: Lewis Chadwick	
Title: Armstrong Trailers 12 x 38 Office (11'-9" x 34'-0")		
Sheet Description: Production Electrical Plan		Page #: E1

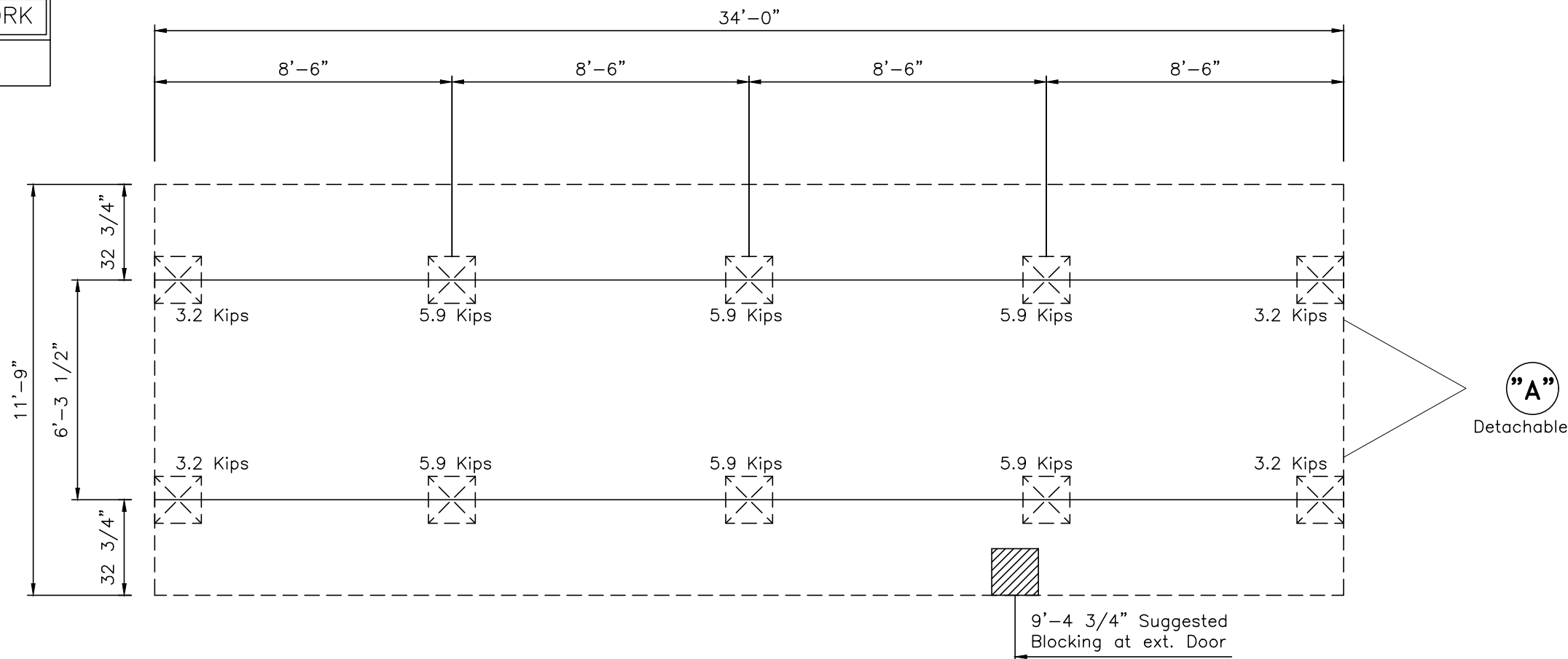
DRAWING LEGEND

SYMBOL	QTY.	DESCRIPTION
	10	Blocking up to main I-beam
	1	Blocking up to floor framing

SITE WORK

FOUNDATION NOTES

- This is a suggested plan only. Foundation to be designed by a professional engineer or registered architect per local soil and climate conditions in accordance with all applicable local and provincial codes.
- C&B Custom Modular Inc. assumes no responsibility for actual foundation design and/or construction.
- Numbers adjacent to piers are unfactored vertical loads in KIPS.

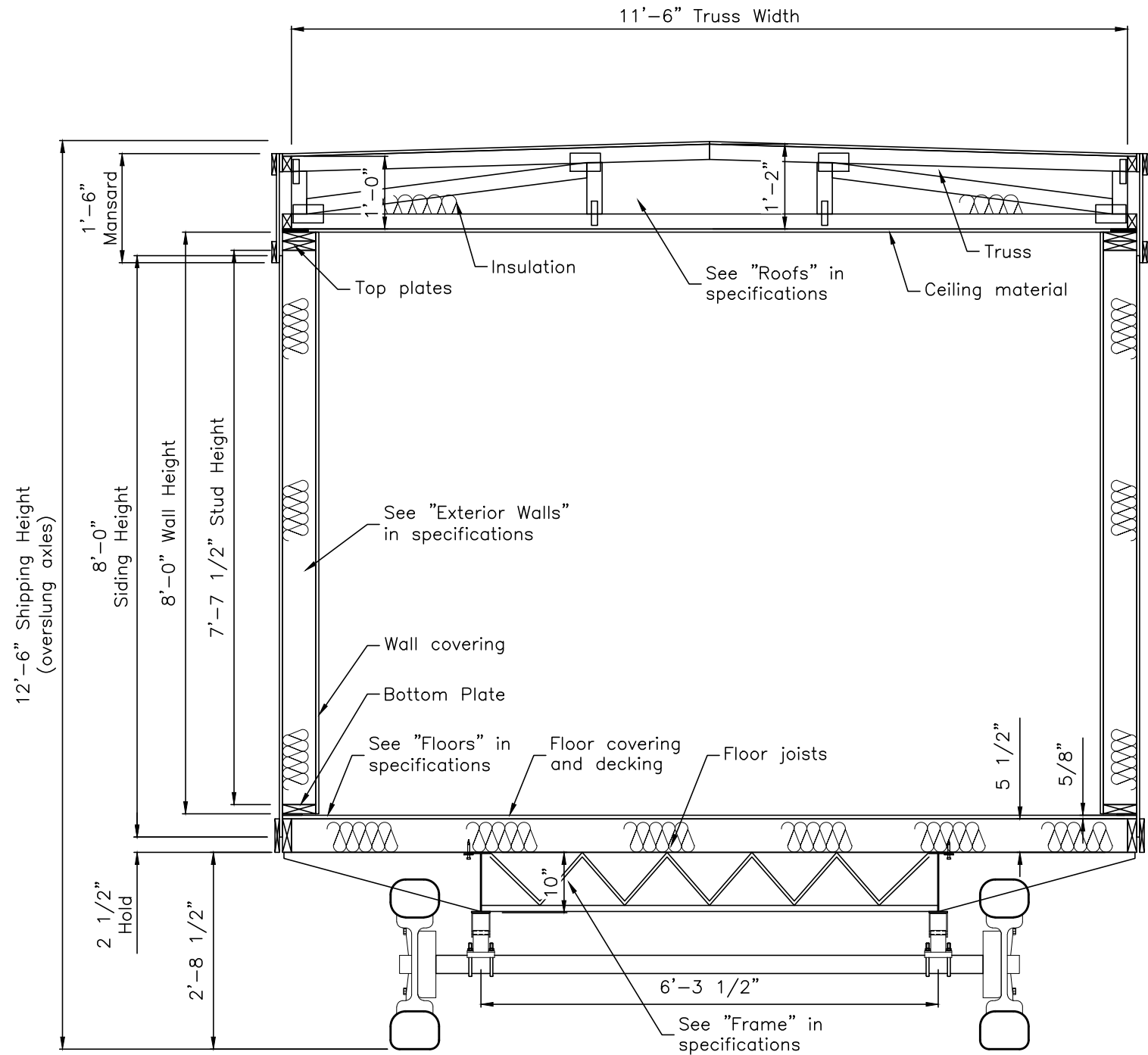


ID	Revision	Date

Scale: 1/4" = 1'-0"	Drawn: Becky B.	Date: 5/10/16	Plot Date: May 26, 2016
Serial Numbers: 16-19395	Drawing Number: 1955	DWG File Name: 16-19395.dwg	
Approval Numbers: QPS-Electrical		Sales Representative: Lewis Chadwick	
Title: Armstrong Trailers 12 x 38 Office (11'-9" x 34'-0")			
Sheet Description: Suggested Blocking Points			Page #: S1

ARMSTRONG
Manufactured Homes - Office Trailers

C
U
S
T
O
M
O
M
O
D
U
L
A
R
I
N
C.
2224 Bloomingdale Drive
Bristol, Indiana 46507
PH: (574) 848-7300
FX: (574) 848-1950



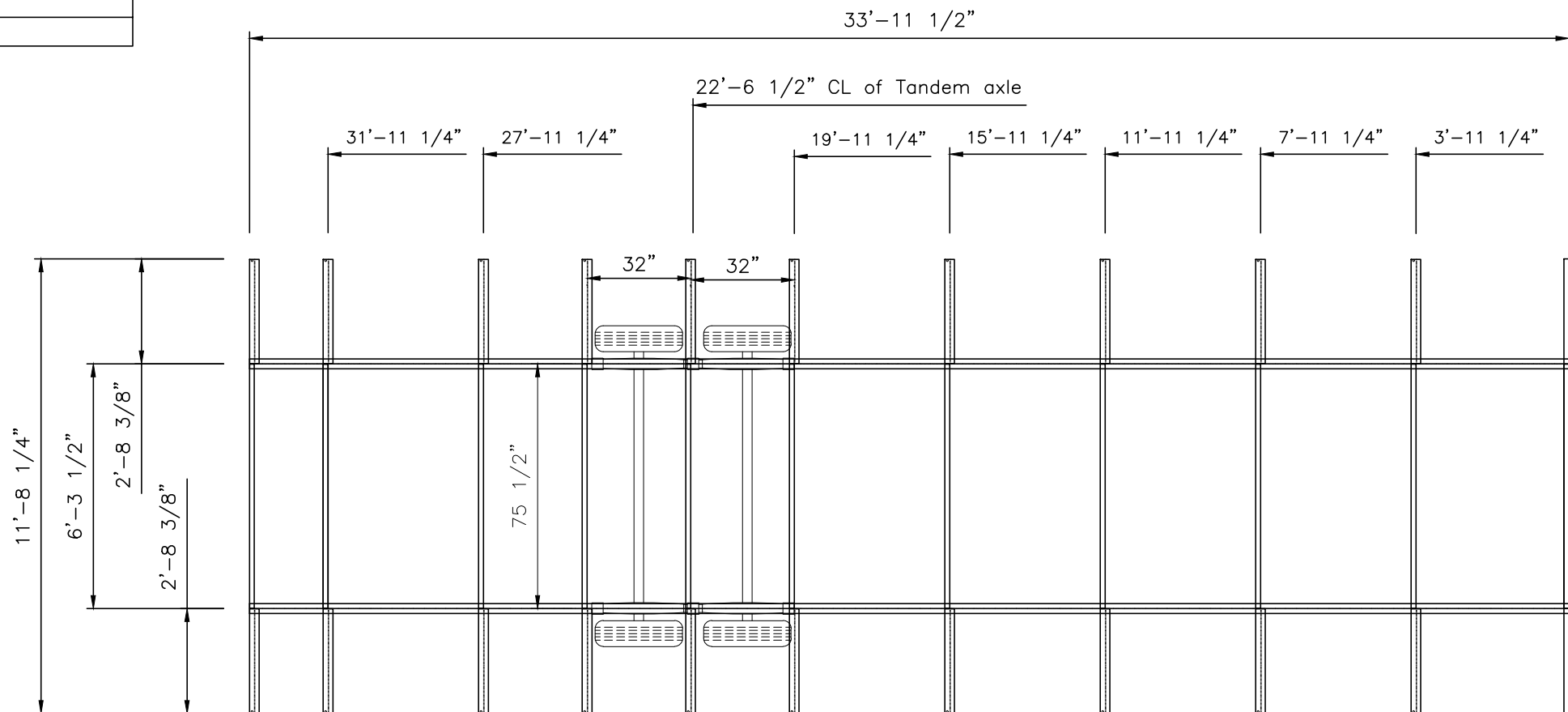
ARMSTRONG
 Manufactured Homes - Office Trailers

C
U
S
T
O
M
O
M
O
D
U
L
A
R
I
N
C.
 2224 Bloomingdale Drive
 Bristol, Indiana 46507
 PH: (574) 848-7300
 FX: (574) 848-1950

ID	Revision		Date
Scale:	Drawn:	Date:	Plot Date:
N/A	Becky B.	5/10/16	May 26, 2016
Serial Numbers:	Drawing Number:	DWG File Name:	
16-19395	1955	16-19395.dwg	
Approval Numbers:		Sales Representative:	
QPS-Electrical		Lewis Chadwick	
Title:			
Armstrong Trailers 12 x 38 Office (11'-9" x 34'-0")			
Sheet Description:			Page #:
Building Cross Section and Details			S2

DRAWING LEGEND

SYMBOL	QTY.	DESCRIPTION
--------	------	-------------



Size: 12x36
Axles: 2-75 1/2"

"A"
Detachable

ID	Revision	Date

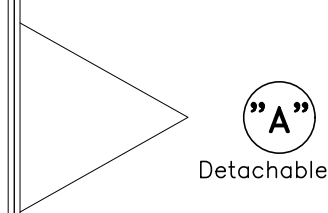
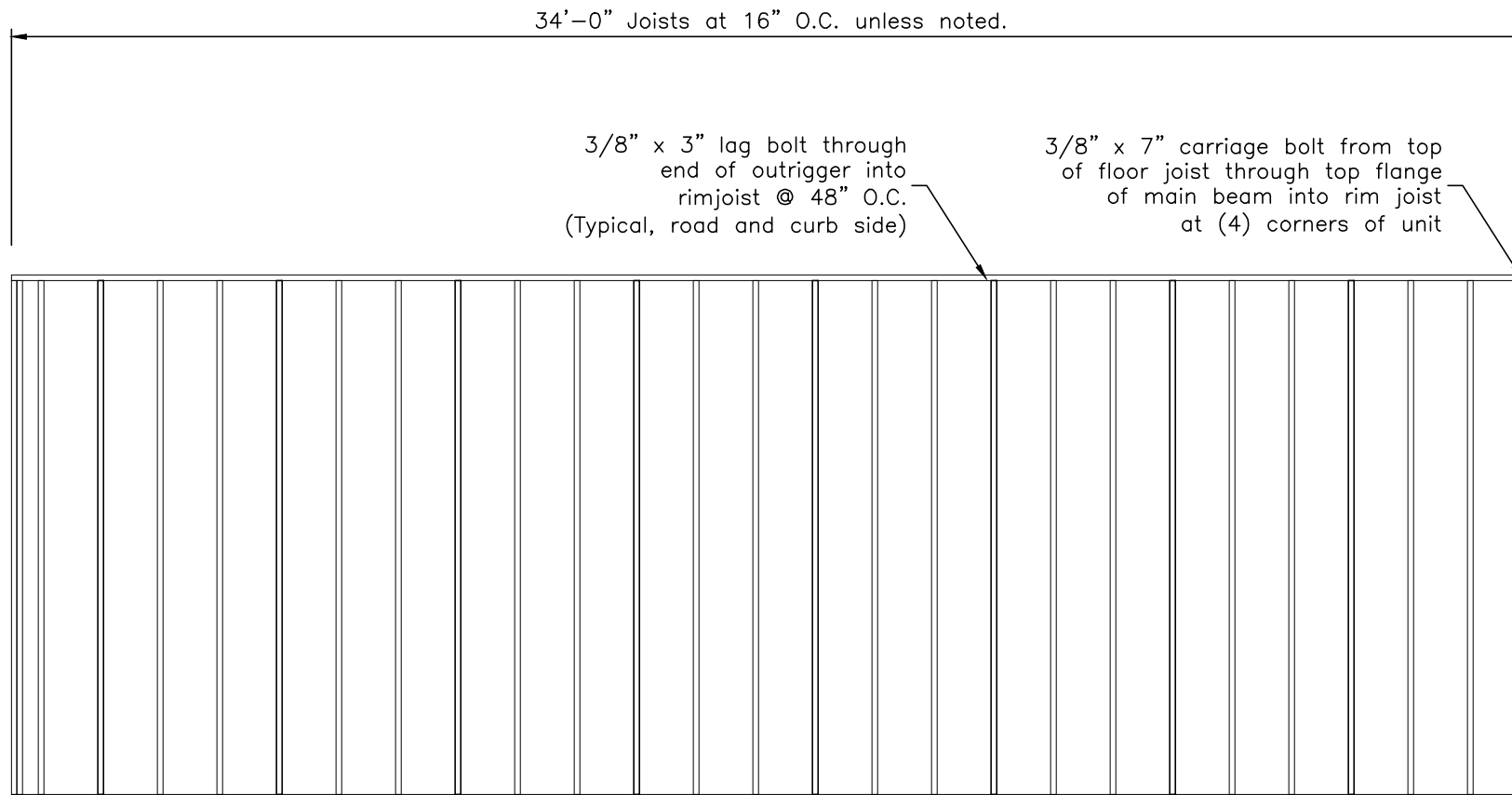
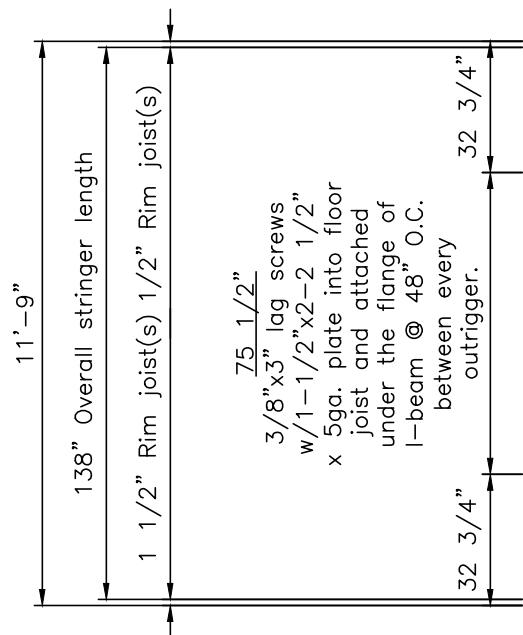
Scale: 1/4" = 1'-0"	Drawn: Becky B.	Date: 5/10/16	Plot Date: May 26, 2016
Serial Numbers: 16-19395	Drawing Number: 1955	DWG File Name: 16-19395.dwg	
Approval Numbers: QPS-Electrical		Sales Representative: Lewis Chadwick	
Title: Armstrong Trailers 12 x 38 Office (11'-9" x 34'-0")			
Sheet Description: Production Steel Frame Plan			Page #: S3

ARMSTRONG
Manufactured Homes - Office Trailers

C
U
S
T
O
M
E
R
C
&
B
MODULAR, INC.
2224 Bloomingdale Drive
Bristol, Indiana 46507
PH: (574) 848-7300
FX: (574) 848-1950

DRAWING LEGEND

SYMBOL	QTY.	DESCRIPTION
--------	------	-------------



ID	Revision	Date

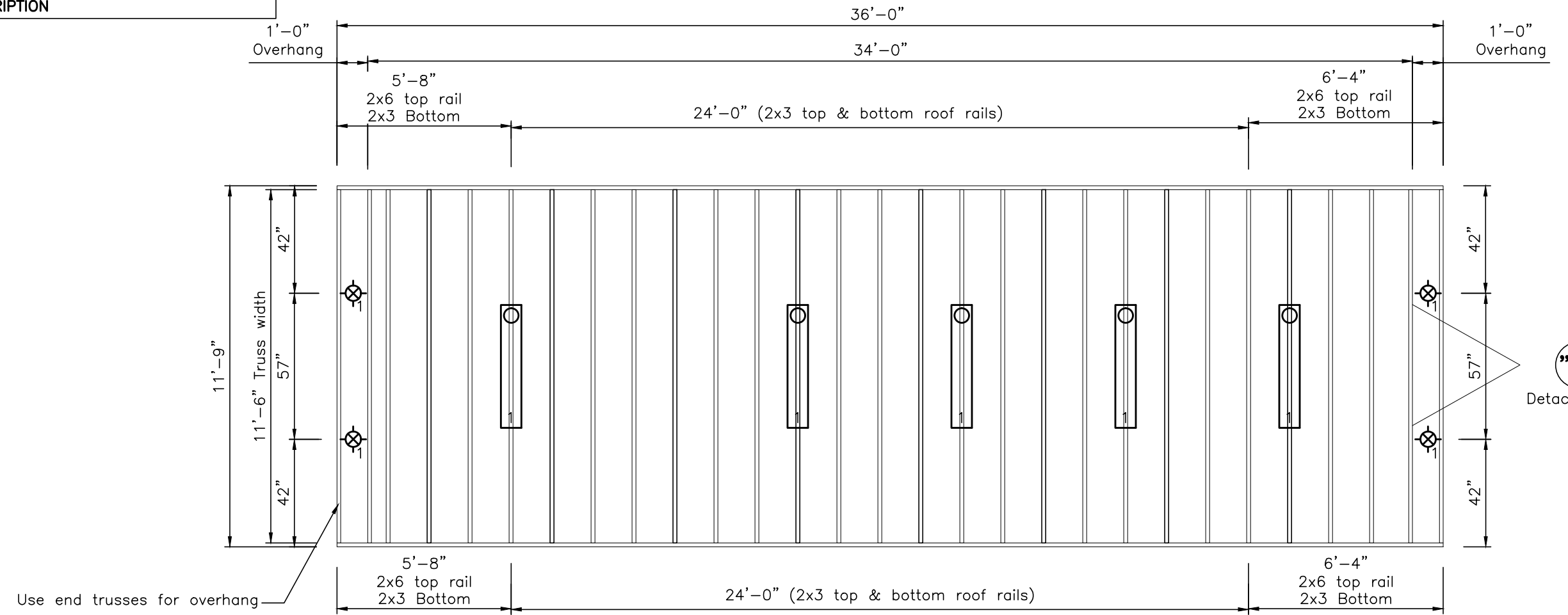
ARMSTRONG
Manufactured Homes - Office Trailers

C
U
S
T
O
M
O
M
O
D
U
L
A
R
I
N
C.
2224 Bloomingdale Drive
Bristol, Indiana 46507
PH: (574) 848-7300
FX: (574) 848-1950

Scale: 1/4" = 1'-0"	Drawn: Becky B.	Date: 5/10/16	Plot Date: May 26, 2016
Serial Numbers: 16-19395	Drawing Number: 1955	DWG File Name: 16-19395.dwg	
Approval Numbers: QPS-Electrical		Sales Representative: Lewis Chadwick	
Title: Armstrong Trailers 12 x 38 Office (11'-9" x 34'-0")			
Sheet Description: Production Floor Framing Plan			Page #: S4

DRAWING LEGEND

SYMBOL	QTY.	DESCRIPTION
--------	------	-------------



ARMSTRONG
 Manufactured Homes - Office Trailers

CUSTOMER MODULAR, INC.
 2224 Bloomingdale Drive
 Bristol, Indiana 46507
 PH: (574) 848-7300
 FX: (574) 848-1950

ID	Revision	Date

Scale: 1/4" = 1'-0"	Drawn: Becky B.	Date: 5/10/16	Plot Date: May 26, 2016
Serial Numbers: 16-19395	Drawing Number: 1955	DWG File Name: 16-19395.dwg	
Approval Numbers: QPS-Electrical		Sales Representative: Lewis Chadwick	
Title: Armstrong Trailers 12 x 38 Office (11'-9" x 34'-0")			
Sheet Description: Production Roof Framing Plan			Page #: S5