

APPROVED FOR PRODUCTION

Armstrong Trailers Limited
 10 x 34 Office
 9'-9" x 30'-0" Actual Size

Design Criteria

SQUARE FOOTAGE 292 SQ.FT.
 OCCUPANCY LOAD: 3
 FLOOR DEAD LOAD 16 PSF.
 FLOOR LIVE LOAD 50 PSF.
 ROOF DEAD LOAD: 7 PSF.
 GROUND SNOW LOAD 40 PSF.
 ROOF SNOW LOAD: 40 PSF.
 Building Weight: 7,800 lbs.

FRAME - OUTRIGGER

MAIN I-BEAM: M8X6.5 I-BEAM (ASTM A36)
 CROSSMEMBER: ANGLE & ROD AND 13GA FORMED STEEL OUTRIGGER @ 48" O.C.
 NOTE: SOLID REAR CROSSMEMBERS AND RECESSED TAIL LIGHTS
 HITCH: WELDED W/2 5/16" CUP AND JACK
 MISC: W/BARGMAN PLUG
 AXLES: 2 W/BRAKES, 6-MULTI-LEAF SPRINGS OVERSLUNG (SINGLE TANDEM)
 NOTE: 75 1/2" SPRING CENTERS
 TIRES: 14-PLY
 PAINT: MIN 3 MIL BLACK ASPHALT
 NOTE 2 SINGLE STEP RV TYPE
 TIE DOWNS: FRAME TIES, IF REQUIRED BY OTHERS AT SITE

FLOOR - TRANSVERSE

BOTTOM BOARD: WOVEN PLASTIC INSULATION SUPPORT
 NOTE: FASTEN TO BOTTOM OF JOIST 24"OC MAX
 INSULATION: R-11 UNFACED FIBERGLASS
 JOISTS: 2X6 #2 SPF EQUAL OR BETTER @ 16" O.C. (TRANSVERSE)
 RIM JOIST: 2X6 #2 SPF EQUAL OR BETTER
 DECKING: 5/8" (19/32") T&G DOUGLAS FIR PLYWOOD 16" O.C. MIN. SPAN INDEX
 COVERING: 1/8" VINYL COMPOSITION TILE (CLASS A/1 F.S.)
 (COLOR = #51839 FORTRESS WHITE)

EXTERIOR WALLS

STUDS: 2X4 STUD GRADE SPF EQUAL OR BETTER @ 16" O.C.
 BOTTOM PLATE: SINGLE 2X4 #3 SPF EQUAL OR BETTER
 TOP PLATE(S): SINGLE 2X4 #3 SPF EQUAL OR BETTER
 WALL HEIGHT: 7'-0"
 WALL COVERING: 1/4" NATURAL BIRCH PANELING (CLASS C/3 F.S.)
 1/4" HAMPTON GRAY VINYL COVERED PANEL END WALLS (CLASS C/3 F.S.)
 INSULATION: R-11 UNFACED FIBERGLASS BATTS
 SHEATHING: 3/8" OSB FULL PERIMETER
 SIDING: .019 ALUMINUM
 (COLOR = COLONIAL WHITE - SMOOTH)
 NOTE: SCREW EVERY MESA
 TRIM: .019 ALUMINUM (CORNERS, TOP BOTTOM)
 (COLOR = EARTH BROWN - RCE)
 NOTE: DO NOT INSTALL DEALER DECALS
 MISC: ANSI CONSTRUCTION

INTERIOR WALLS

STUDS: 2X4 STUD GRADE SPF EQUAL OR BETTER @ 16" O.C.
 BOTTOM PLATE: SINGLE 2X4 #3 SPF EQUAL OR BETTER
 TOP PLATE(S): SINGLE 2X4 #3 SPF EQUAL OR BETTER
 WALL HEIGHT: 7'-0"
 WALL COVERING: 1/4" NATURAL BIRCH PANELING (CLASS C/3 F.S.)
 TRIM: STANDARD WOOD PROFILES
 TRIM: VINYL BATTENS AT TOP, VERTICAL SEAMS & CORNERS
 TRIM: 4" VINYL BASE COVE (COLOR = BLACK #P100)

ROOF

RAFTERS: BOW TRUSSES @ 16" O.C. W/40# LIVE LOAD
 5 1/2" HEEL X 12 1/4" CROWN 9' - 6" LONG TRUSS#CS-100
 CEILING PANEL: 1/2" PREFINISHED GYPSUM W/VAPOR BARRIER (CLASS A/1 F.S.)
 INSULATION: R-11 UNFACED FIBERGLASS
 SHEATHING: 3/8" OSB 16/0 SPAN INDEX
 ROOFING: 30 GA GALVANIZED
 GUTTERS: K-60 J-RAIL

EXTERIOR DOORS

A: 2 36X80 ELIXER #402-10 VINYL CLAD DOOR W/ALUM. FRAME,
 10X10 SAFETY GLAZED LITE, LOCKWARE #5401 KNOB LOCK SET, DRIP CAP,
 WEATHER STRIPPING, STAY-CHAIN AND THRESHOLD. (COLOR = COLONIAL WHITE)

INTERIOR DOORS

B: 1 36X80 PREFINISHED HOLLOW CORE WOOD DOOR W/PANEL JAMBS,
 BUTTERFLY HINGES, FASTEC PASSAGE #DL22-SS US32D KNOB SET
 AND FLOOR MOUNT DOOR STOP

WINDOWS

1: 3 46X27 HORIZONTAL SLIDER W/ALUM. EXTRUDED MILL FRAME
 SINGLE CLEAR GLASS, (WHITE) SELF STORING STORMS AND BUG SCREEN
 2: 4 30X27 HORIZONTAL SLIDER W/ALUM. EXTRUDED MILL FRAME
 SINGLE CLEAR GLASS, (WHITE) SELF STORING STORMS AND BUG SCREEN

ELECTRICAL-CSA

NOTE: ALL ELECTRICAL TO BE CSA RATED
 SERVICE: 120/240V SINGLE PHASE, 3 WIRE, 60HZ W/GROUND
 LOAD CENTER: 1 24 CIRCUIT WITH MAIN 100AMP BREAKER #CQ0124M125C100
 NOTE: CSA HEIGHT TO BE 36" TO BOTTOM.
 ENTRANCE: 1 1/2" EMT CONDUIT STUB THRU SIDEWALL
 RACEWAY: MIN. #14 AWG NM UP TO 40A. > 40A IN SE TYPE WIRE. (CSA)
 LIGHTS: 3 4' 2 T8-TUBE FLUORESCENT W/DIFFUSER & ELECT. BALLAST
 W/LUM. DISCT. #SB 232 120 RE
 NOTE: CSA, ALL SWITCHES AND RECET TO BE GROUND TO J-BOX
 RECEPTACLES: 6 120V 15A IVORY DUPLEX GROUNDING TYPE #53201CP
 2 120V 20A IVORY SINGLE GROUNDING TYPE A/C RECEPT #5081I
 2 120V 15A IVORY TOGGLE TYPE #CSB115I
 SWITCHES:

HVAC

HEATING: 3 6' 1.5KW 120 VOLT BASEBOARD HEATER #2516
 THERMOSTAT 3 120V WALL MOUNT #MS26
 COOLING: 2 5,000 BTU 120V THRU WALL AIR CONDITIONER (PERFECT AIR #PAC 5,000)

SPECIALTIES

EXTINGUISHER: IF REQUIRED BY OTHERS AT SITE

Building Notes:

- All materials are C and B Custom Modular's standards unless otherwise specified.
- All door adjustments are on site by others.
- C and B Custom Modular Inc. is not responsible for local codes or permits.
- Construction type trailer

VIN#

16-19299 = RP9FT3029GA028055

16-19407 = RP9FT3020GA028056

Drawing Index

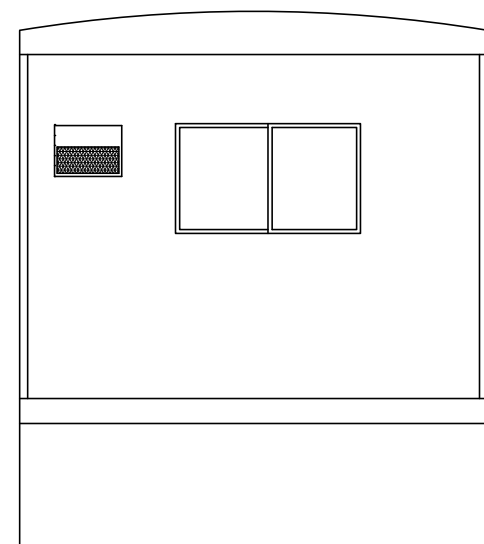
Page	Page Description
C1	Project Cover Sheet
A1	Building Elevations
A2	Production Floor Plan

ID	Revision	Date

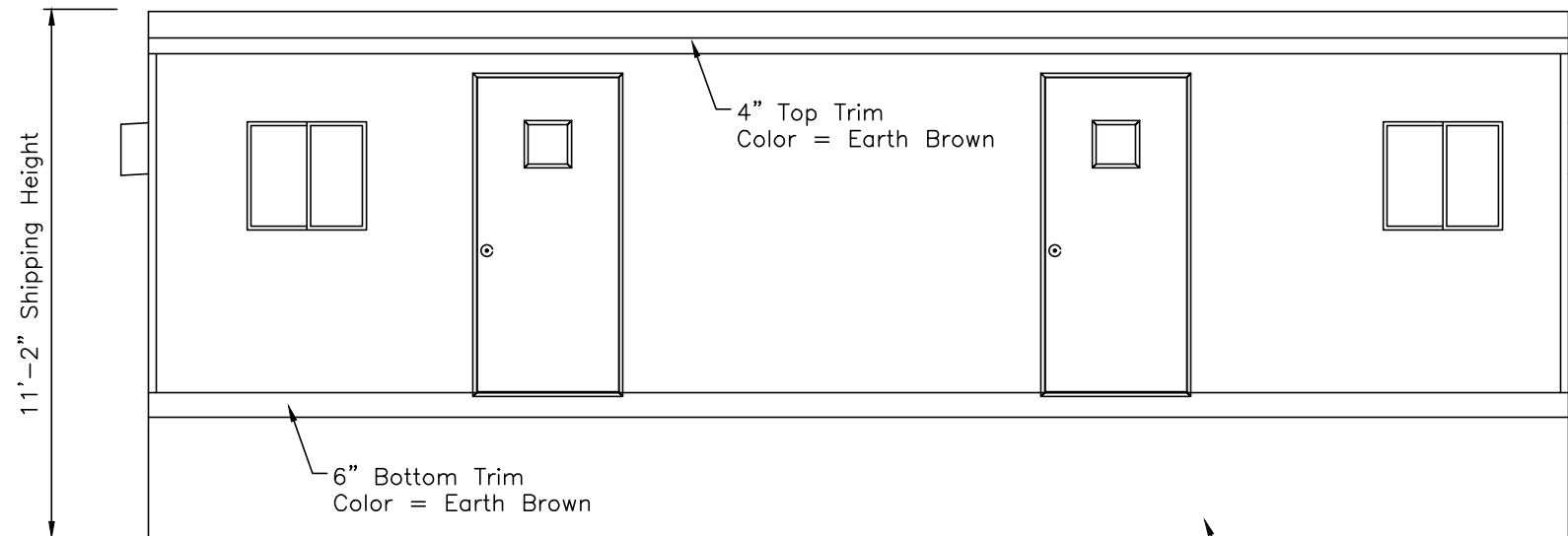


2224 Bloomingdale Drive
 Bristol, Indiana 46507
 PH: (574) 848-7300
 FX: (574) 848-1950
 C & B
 MODULAR, INC.

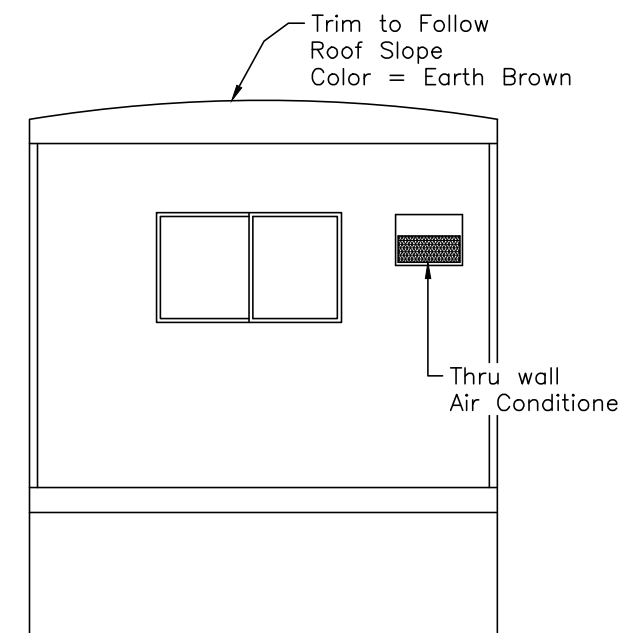
Scale: N/A	Drawn: Becky B.	Date: 8/6/16	Plot Date: Aug 09, 2016
Serial Numbers: 16-19299 & 16-19407	Drawing Number: 1230	DWG File Name: 16-19299_407.dwg	
Approval Numbers: QPS-Electric	Sales Representative: Lewis Chadwick		
Title: Armstrong Trailers Limited 10 x 34 Office (9'-9" x 30'-0")			
Sheet Description: Building Cover Sheet			Page #: C1



Elevation "D"



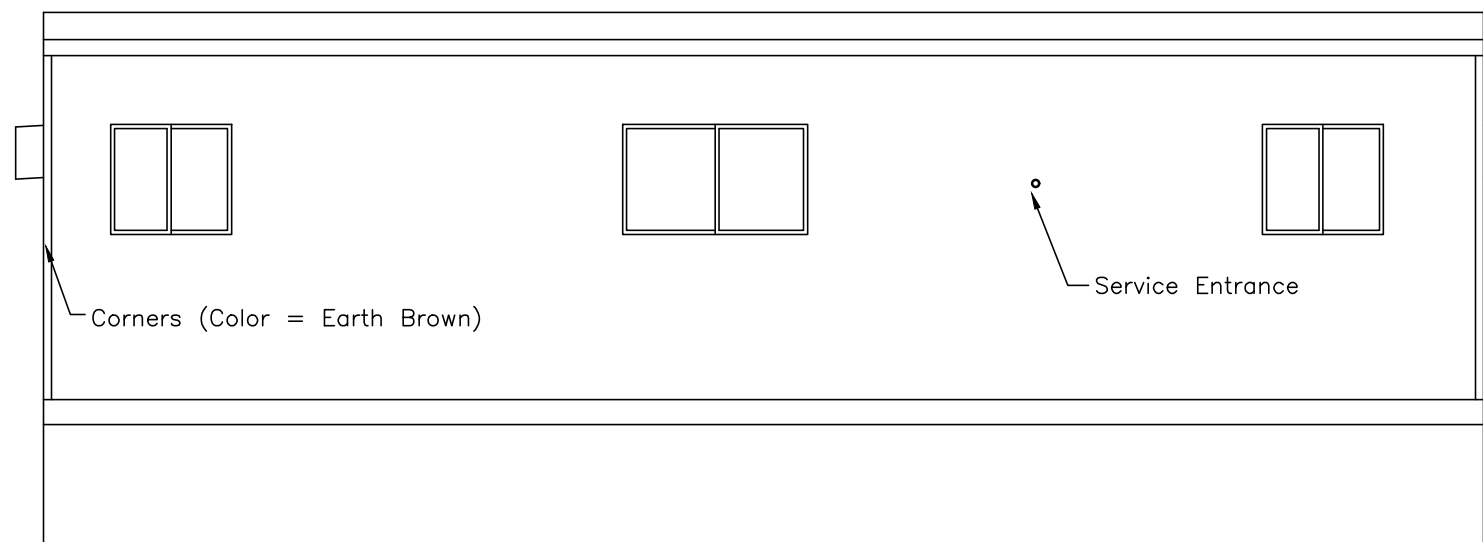
Elevation "A"



Elevation "B"

11'-2" Shipping Height

Skirting by others at site



Elevation "C"

ID	Revision	Date

ARMSTRONG
Manufactured Homes - Office Trailers

2224 Bloomingdale Drive
 Bristol, Indiana 46507
 PH: (574) 848-7300
 FX: (574) 848-1950

C & B
 MODULAR, INC.

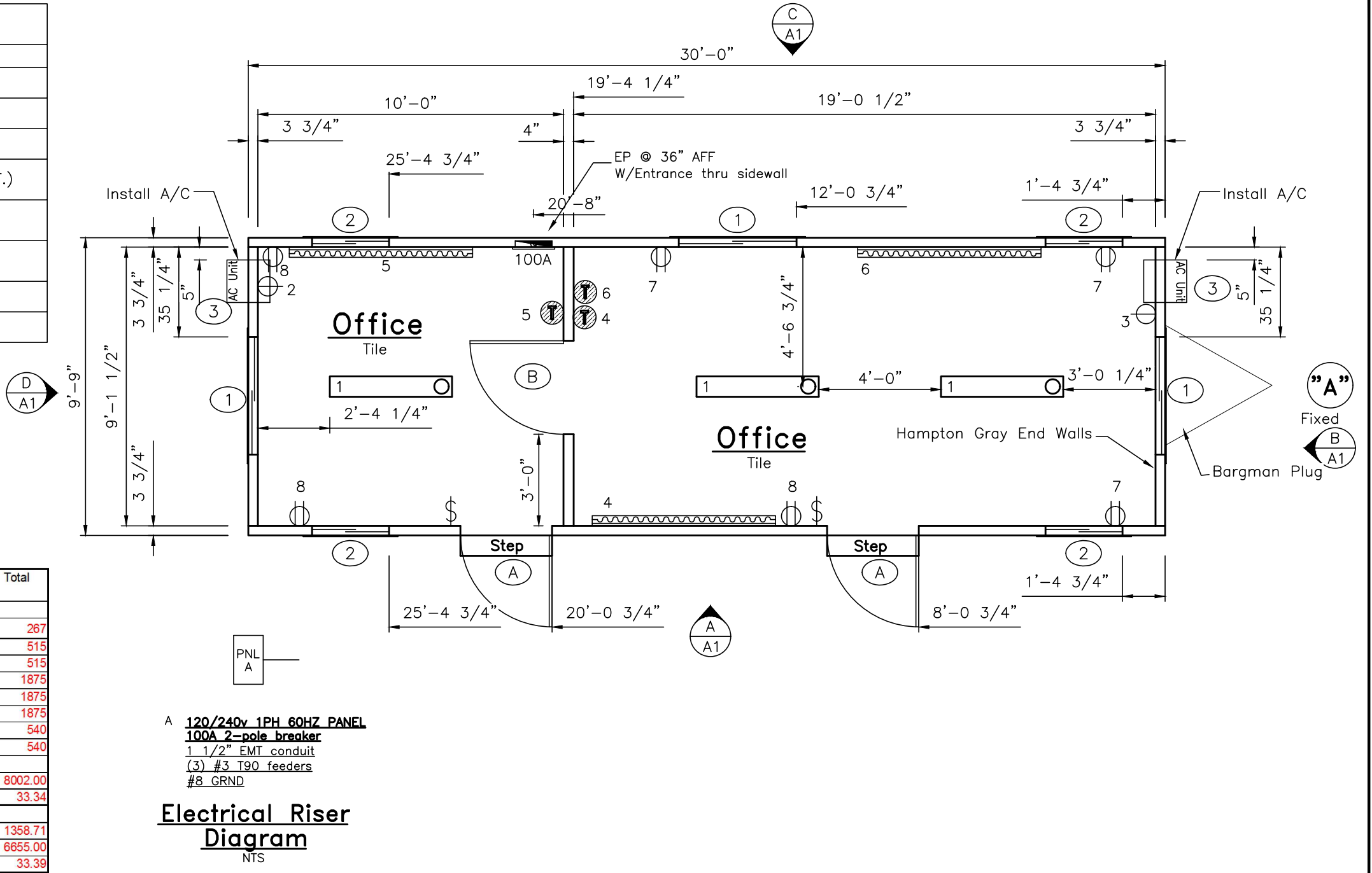
Scale: Noted	Drawn: Becky B.	Date: 8/6/16	Plot Date: Aug 09, 2016
Serial Numbers: 16-19299 & 16-19407	Drawing Number: 1230	DWG File Name: 16-19299_407.dwg	
Approval Numbers: QPS-Electric	Sales Representative: Lewis Chadwick		
Title: Armstrong Trailers Limited 10 x 34 Office (9'-9" x 30'-0")			
Sheet Description: Building Elevations			Page #: A1

DRAWING		LEGEND	
SYMBOL	QTY.	DESCRIPTION	
	0	Over the floor hurricane straps/Tie down locations	
	1	120/240 electric panel (+36" AFF)	
	3	Thermostat (+48" AFF to top)	
	3	120V 1.5KW Electric 72" Baseboard heater (+4" A.F.F.)	
	6	120V ivory duplex grounding type (+18" AFF unless noted)	
	2	120V ivory single A/C Recept (+42" AFF)	
	2	120V ivory toggle type (+42" AFF unless noted)	
	3	120V 4' (2) tube surface mount w/diffuser	

Wire Size Chart (90° C)			
Breaker Size	Wire Size	Breaker Size	Wire Size
15A	#14	80A	#4
20A	#12	90A	#3
30A	#10	100A	#3
40A	#8	115A	#2
50A	#6	130A	#1
60A	#6	150A	1/0

Modul A	Area Served Sq. Meter	Area served	292.5 ft	Panel Voltage	240
	27.1741392 ft	Main Breaker	100A	Panel Phase	1

CKT#	Breaker size	Description	QTY	Voltage	Wattage per item	Connected Load	Load Factor	Calculated load	Total
1	15 /1	Lights (2-tube)	3	120	71.2	213.6	1.25	267	
		Exterior Lights	0	120	75	0	1.25	0	267
2	20 /1	A/C Recept	1	120	515	515	1.00	515	515
3	20 /1	A/C Recept	1	120	515	515	1.00	515	515
4	20 /1	Baseboard Heater	1	120	1500	1500	1.25	1875	1875
5	20 /1	Baseboard Heater	1	120	1500	1500	1.25	1875	1875
6	20 /1	Baseboard Heater	1	120	1500	1500	1.25	1875	1875
7	15 /1	Recepts	3	120	180	540	1.00	540	540
8	15 /1	Recepts	3	120	180	540	1.00	540	540
Total connected load									8002.00
Total connected load amps									33.34
Load factor									50 1358.71
Appliance Load									6655.00
CEC 2012 Elec Load Amps									33.39



DOOR, WINDOW AND OPENING SCHEDULE			
SYMBOL	QTY.	DESCRIPTION	ROUGH OPENING
A	2	Door: 36x80 Elixer vinyl clad door w/10x10 sg-lite Handle: Knob keyed lock set Other: Drip cap, threshold, weather stripping Frame: Aluminum Closer: Stay Chain	36 x 80
B	1	Door: 36x80 prefinished hollow core wood door Handle: Passage knob set - Fastec #DL22-SS US32D Other: Butterfly hinges, floor mount door stop Frame: Panel Closer:	36 3/4 x 81 3/4
1	3	Window: 46x27 Horizontal Slider w/single clear glass Frame: Aluminum (Mill Finish) Acc. bug screen, Self storing storms w/White finish frame	46 1/2 x 27 1/4 up 41 1/4" A.F.F.
2	4	Window: 30x27 Horizontal Slider w/single clear glass Frame: Aluminum (Mill Finish) Acc. bug screen, Self storing storms w/white finish frame	30 1/2 x 27 1/4 up 41 1/4" A.F.F.
3	2	Window: Framed Opening for thru wall Air Conditioner Frame: (2) Install, 5,000 BTU 120V Acc.	16 3/4 x 12 3/4 up 55 1/2" A.F.F.

ARMSTRONG
 Manufactured Homes - Office Trailers

2224 Bloomingdale Drive
 Bristol, Indiana 46507
 PH: (574) 848-7300
 FX: (574) 848-1950

C
U
S
T
O
M
O
M
O
D
U
L
A
R
I
N
C.

ID	Revision	Date

Scale: 1/4" = 1'-0"	Drawn: Becky B.	Date: 8/6/16	Plot Date: Aug 09, 2016
Serial Numbers: 16-19299 & 16-19407	Drawing Number: 1230	DWG File Name: 16-19299_407.dwg	
Approval Numbers: QPS-Electric	Sales Representative: Lewis Chadwick		
Title: Armstrong Trailers Limited 10 x 34 Office (9'-9" x 30'-0")			
Sheet Description: Production Floor /Electrical Plan			Page #: A2