

**Design Criteria**

SQUARE FOOTAGE: 195 SF  
 OCCUPANCY LOAD: 2  
 FLOOR DEAD LOAD: 19 PSF  
 FLOOR LIVE LOAD: 50 PSF  
 ROOF DEAD LOAD: 6 PSF  
 SNOW LOAD: 40 PSF  
 WIND SPEED: 90 MPH  
 BUILDING WEIGHT: 5,300 LBS.

# APPROVED FOR PRODUCTION

*Armstrong Trailers*  
 10 x 24 Office  
 9'-9" x 20'-0" Actual Size

**FRAME - OUTRIGGER**

MAIN I-BEAM: M8X6.5 I-BEAM (ASTM A36)  
 CROSSMEMBER: ANGLE & ROD AND 13GA FORMED STEEL OUTRIGGER @ 48" O.C.  
 NOTE: SOLID REAR CROSSMEMBERS AND RECESSED TAIL LIGHTS  
 HITCH: WELDED W/2 5/16" CUP AND JACK  
 MISC: W/BARGMAN PLUG  
 AXLES: SINGLE 6-MULTI-LEAF SPRINGS OVERSLUNG  
 NOTE: 75 1/2" SPRING CENTERS  
 TIRES: 14-PLY  
 PAINT: MIN 3 MIL BLACK ASPHALT  
 MISC: 1 SINGLE RV TYPE STEP  
 TIE DOWNS: FRAME TIES, IF REQUIRED, ON SITE BY OTHERS

**FLOOR - TRANSVERSE**

BOTTOM BOARD: WOVEN PLASTIC INSULATION SUPPORT  
 NOTE: FASTENED TO BOTTOM OF JOISTS 24" O.C. MAX  
 INSULATION: R-11 UNFACED FIBERGLASS  
 JOISTS: 2X6 #2 SPF EQUAL OR BETTER @ 16" O.C. (TRANSVERSE)  
 RIM JOIST: 2X6 #2 SPF EQUAL OR BETTER  
 DECKING: 5/8"(19/32") T&G DOUGLAS FIR PLYWOOD 16" O.C. MIN. SPAN INDEX  
 COVERING: 1/8" VINYL COMPOSITION TILE (CLASS A/1 F.S.)  
 (COLOR = #51839 FORTRESS WHITE )

**EXTERIOR WALLS**

STUDS: 2X4 STUD GRADE SPF EQUAL OR BETTER @ 16" O.C.  
 BOTTOM PLATE: SINGLE 2X4 #3 SPF EQUAL OR BETTER  
 TOP PLATE(S): SINGLE 2X4 #3 SPF EQUAL OR BETTER  
 WALL HEIGHT: 7'-0"  
 WALL COVERING: 1/4" NATURAL BIRCH PANELING (CLASS C/3 F.S.)  
 WALL COVERING: 1/4" VINYL COVERED PANELING (CLASS C/3 F.S.) (END WALLS)  
 (COLOR = HAMPTON GRAY )  
 INSULATION: R-11 UNFACED FIBERGLASS BATTS  
 SHEATHING: 3/8" OSB FULL PERIMETER  
 SIDING: .019 ALUMINUM  
 (COLOR = COLONIAL WHITE-SMOOTH )  
 NOTES: SCREW EVERY MESA  
 TRIM: .019 ALUMINUM (CORNERS, TOP AND BOTTOM)  
 (COLOR = EARTH BROWN -RCE)  
 MISC: ANSI CONSTRUCTION

**INTERIOR TRIM**

TRIM: STANDARD WOOD PROFILES  
 TRIM: VINYL BATTENS AT TOP, VERTICAL SEAMS, INSIDE AND OUTSIDE CORNERS  
 TRIM: 4" VINYL COVE BASE (COLOR = #P100 BLACK )

**ROOF**

RAFTERS: BOW TRUSSES @ 16" O.C. W/40# LIVE LOAD  
 5 1/2" HEEL X 12 1/4" CROWN 9' - 6" LONG TRUSS#CS-100  
 CEILING PANEL: 1/2" PREFINISHED GYPSUM W/VAPOR BARRIER (CLASS A/1 F.S.)  
 INSULATION: R-11 UNFACED FIBERGLASS  
 SHEATHING: 3/8" OSB  
 ROOFING: 30 GA GALVANIZED (CLASS C/3 F.S.)  
 GUTTERS: K-60 J-RAIL

**EXTERIOR DOOR**

A: 1 36X80 VINYL CLAD DOOR W/ALUM. FRAME,  
 10X10 SAFETY GLAZED LITE, LOCKWARE #5401 KNOB LOCK SET, DRIP CAP,  
 WEATHER STRIPPING, STAY-CHAIN AND THRESHOLD. (COLOR = COLONIAL WHITE)

**WINDOWS**

2: 3 30X27 HORIZONTAL SLIDER W/SINGLE CLEAR GLASS, ALUM.  
 EXTRUDED MILL FRAME, SELF STORING STORMS (WHITE) AND BUG SCREEN  
 1: 2 46X27 HORIZONTAL SLIDER W/SINGLE CLEAR GLASS, ALUM.  
 EXTRUDED MILL FRAME, SELF STORING STORMS (WHITE) AND BUG SCREEN

**ELECTRICAL-CSA**

SERVICE: ALL ELECTRICAL TO BE CSA RATED  
 120/240V SINGLE PHASE, 3 WIRE, 60HZ W/GROUND  
 LOAD CENTER: 1 24 CIRCUIT WITH MAIN 100AMP BREAKER #CQ0124M125C100  
 NOTE: CSA HEIGHT TO BE 36" TO BOTTOM.  
 ENTRANCE: 1 1/2" EMT CONDUIT STUB THRU SIDEWALL  
 RACEWAY: Min. #14 AWG NM D90 XLPE (CSA)  
 LIGHTS: 2 4' 2 T8-TUBE FLUORESCENT W/DIFFUSER & ELECT. BALLAST  
 W/LUM. DISCT. #SB 232 120 RE.  
 NOTE: CSA SWITCHES AND RECEPT GROUND TO J-BOX  
 RECEPTACLES: 4 120V 15A IVORY DUPLEX GROUNDING TYPE #5320ICP  
 RECEPTACLES: 1 120V 20A IVORY SINGLE GROUNDING TYPE A/C RECEPT #5081I  
 SWITCHES: 1 120V 15A IVORY TOGGLE TYPE #CSB115I

**HVAC**

HEATING: 2 4' 1KW 120 VOLT BASEBOARD HEATER  
 THERMOSTAT: 1 120V WALL MOUNT #MS26  
 COOLING: 1 5,000 BTU 120V THRU WALL AIR CONDITIONER (PERFECT AIRE #PAC 5,000)

**SPECIALTIES**

EXTINGUISHER: IF REQUIRED BY OTHERS AT SITE

**Building Notes:**

- All materials are C and B Custom Modular's standards unless otherwise specified.
- All door adjustments are on site by others.
- C and B Custom Modular Inc. is not responsible for local codes or permits.
- Construction type trailer

VIN#

17-19669 = RP9FT2010HA028003  
 17-19670 = RP9FT2012HA028004  
 17-19671 = RP9FT2014HA028005  
 17-19672 = RP9FT2016HA028006

**Drawing Index**

Page	Page Description
C1	Project Cover Sheet
A1	Building Elevations
A2	Production Floor /Electrical Plan

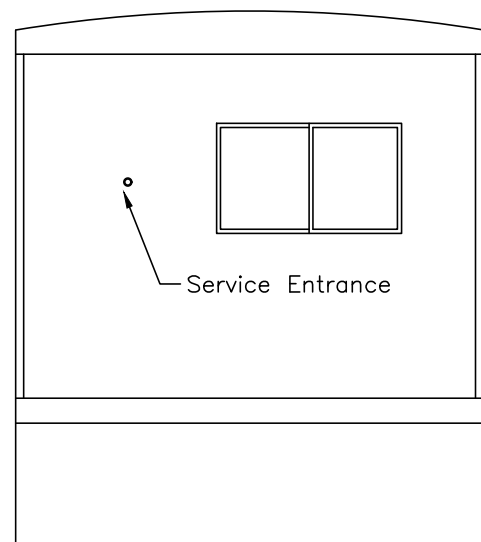
ID	Revision	Date



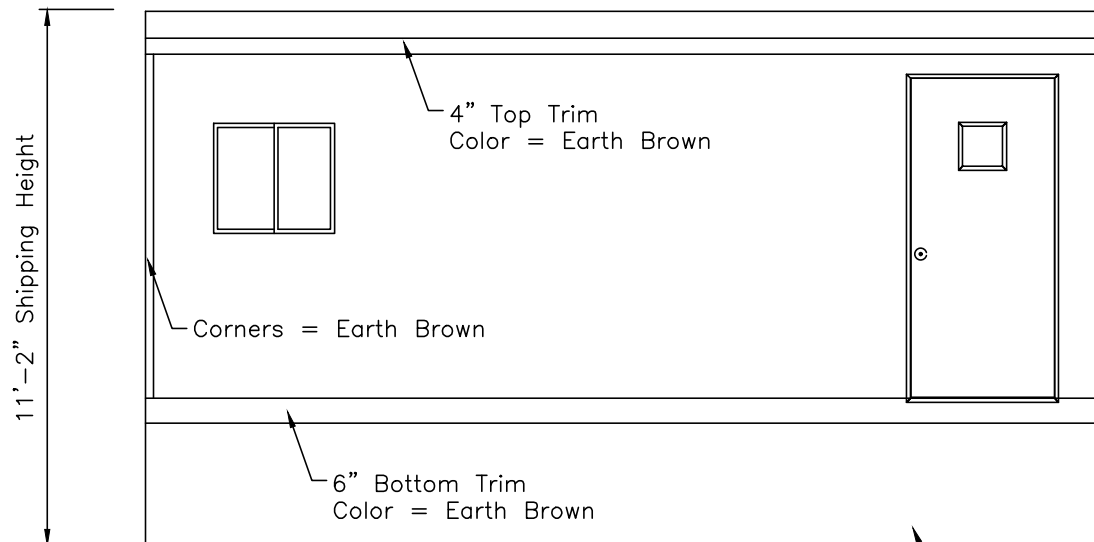
2224 Bloomingdale Drive  
 Bristol, Indiana 46507  
 PH: (574) 848-7300  
 FX: (574) 848-1950  
 C & B  
 MODULAR, INC.

Scale: N/A	Drawn: Becky B.	Date: 1/25/17	Plot Date: Jan 27, 2017
Serial Numbers: 17-19563-64	Drawing Number: 1355	DWG File Name: 17-19669-72.dwg	
Approval Numbers: QPS-Electric	Sales Representative: Lewis Chadwick		

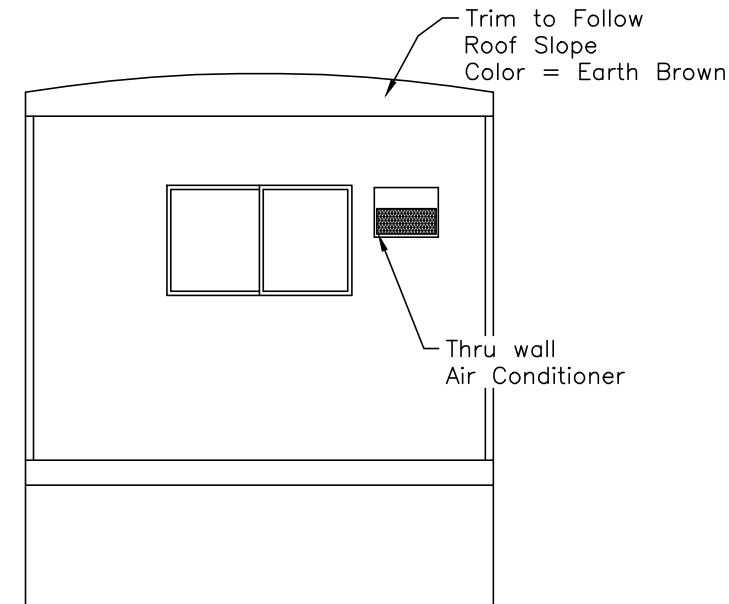
Title: Armstrong Trailers 10 x 24 Office (9'-9" x 20'-0")	
Sheet Description: Building Cover Sheet	Page #: C1



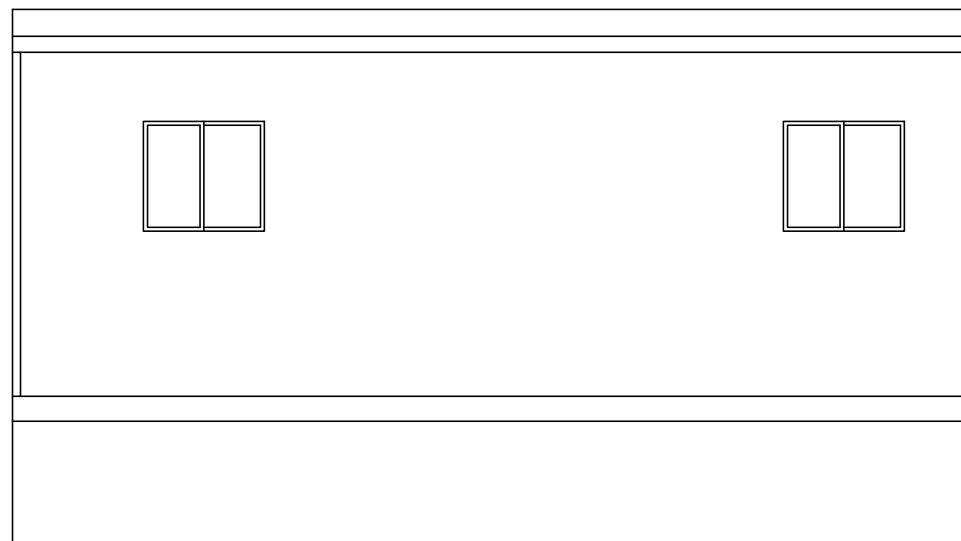
Elevation "D"



Elevation "A"



Elevation "B"



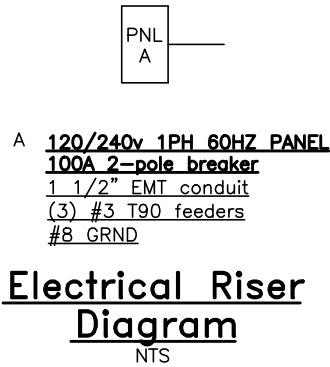
Elevation "C"

**ARMSTRONG**  
 Manufactured Homes - Office Trailers

C  
U  
S  
T  
O  
M  
O  
M  
O  
D  
U  
L  
A  
R  
I  
N  
C.  
 2224 Bloomingdale Drive  
 Bristol, Indiana 46507  
 PH: (574) 848-7300  
 FX: (574) 848-1950

ID	Revision	Date
Scale: Noted	Drawn: Becky B.	Date: 1/25/17
Plot Date: Jan 27, 2017	Serial Numbers: 17-19563-64	Drawing Number: 1355
DWG File Name: 17-19669-72.dwg	Approval Numbers: QPS-Electric	Sales Representative: Lewis Chadwick
Title: Armstrong Trailers 10 x 24 Office (9'-9" x 20'-0")		
Sheet Description: Building Elevations		Page #: A1

DRAWING		LEGEND
SYMBOL	QTY.	DESCRIPTION
	1	120/240 electric panel (+36" AFF)
	1	120V Thermostat (+48" AFF to top)
	2	120V 1KW Electric 48" Baseboard heater (+4" A.F.F.)
	4	120V ivory duplex grounding type (+18" AFF unless noted)
	1	120V ivory single A/C Recept (+42" AFF)
	1	120V ivory toggle type (+42" AFF unless noted)
	2	120V 4' (2) tube surface mount W/Diffuser

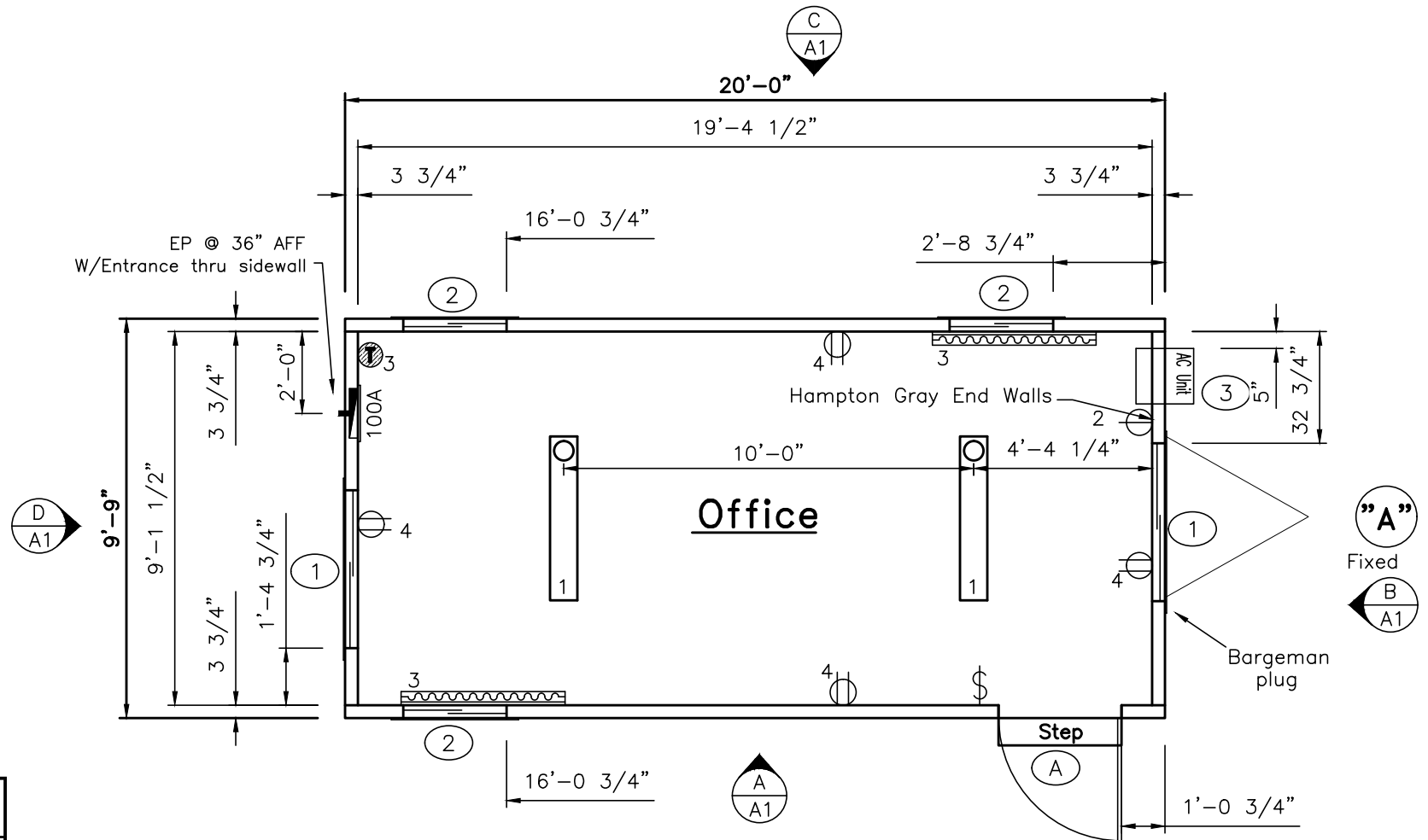


Breaker Size	Wire Size	Breaker Size	Wire Size
15A	#14	80A	#4
20A	#12	90A	#3
30A	#10	100A	#3
40A	#8	115A	#2
50A	#6	130A	#1
60A	#6	150A	1/0

Modul **A** Area Served Sq. Meter **18.1160928 ft** Area served **195 ft** Panel Voltage **240**  
Main Breaker **100A** Panel Phase **1**

CKT#	Breaker size	Description	QTY	Voltage	Wattage per item	Connected Load	Load Factor	Calculated load	Total
1	15 /1	Lights (2-tube)	2	120	71.2	142.4	1.25	178	
		Exterior Lights	0	120	75	0	1.25	0	178
2	20 /1	A/C Recept	1	120	515	515	1.00	515	515
3	20 /1	Baseboard Heater (1kw)	2	120	1000	2000	1.25	2500	2500
4	15 /1	Recepts	4	120	180	720	1.00	720	720

Total connected load	3913.00
Total connected load amps	16.30
Load factor	50 905.80
Appliance Load	3015.00
CEC 2012 Elec Load Amps	16.34



### DOOR, WINDOW AND OPENING SCHEDULE

SYMBOL	QTY.	DESCRIPTION	ROUGH OPENING
A	1	Door: 36x80 vinyl clad door w/10x10 sg-lite Handle: Knob keyed lock set Other: Drip cap, threshold, weather stripping Frame: Aluminum Closer: Stay Chain	36 x 80
1	2	Window: 46x27 Horizontal Slider w/single clear glass Frame: Aluminum (Mill Finish) Acc. bug screen, Self storing storms w/WHITE finish frame	46 1/2 x 27 1/4 up 41 1/4" A.F.F.
2	3	Window: 30x27 Horizontal Slider w/single clear glass Frame: Aluminum (Mill Finish) Acc. bug screen, Self storing storms w/WHITE finish frame	30 1/2 x 27 1/4 up 41 1/4" A.F.F.
3	1	Window: Framed Opening for thru wall Air Conditioner Frame: (1) Install, 5,000 BTU 120V Acc.	16 3/4 x 12 3/4 up 55 1/2" A.F.F.

**ARMSTRONG**  
Manufactured Homes - Office Trailers

2224 Bloomingdale Drive  
Bristol, Indiana 46507  
PH: (574) 848-7300  
FX: (574) 848-1950

CUSTOMER MODULAR, INC.

ID	Revision	Date
Scale: 1/4" = 1'-0"	Drawn: Becky B.	Date: 1/25/17
Serial Numbers: 17-19563-64	Drawing Number: 1355	DWG File Name: 17-19669-72.dwg
Approval Numbers: QPS-Electric	Sales Representative: Lewis Chadwick	
Title: Armstrong Trailers 10 x 24 Office (9'-9" x 20'-0")		
Sheet Description: Production Floor /Electrical Plan	Page #: A2	