

**Design Criteria**

SQUARE FOOTAGE: 128 SF  
 OCCUPANCY LOAD: 2  
 FLOOR DEAD LOAD: 21 PSF  
 FLOOR LIVE LOAD: 50 PSF  
 ROOF DEAD LOAD: 7 PSF  
 SNOW LOAD: 30 PSF  
 WIND SPEED: 90 MPH  
 Building Weight: 3,800 LBS.

# APPROVED FOR PRODUCTION

*Armstrong Trailer  
 820 Office  
 8'-0" x 16'-0" Actual Size*

**FRAME – OUTRIGGER**

MAIN BEAM: 2x4 11GA TUBE  
 CROSSMEMBER: ANGLE & ROD AND 13GA FORMED STEEL OUTRIGGER @ 48" O. C.  
 NOTE: SOLID REAR CROSSMEMBERS AND RECESSED TAIL LIGHTS  
 MISC: 3" C-CHANNEL REAR BUMPER  
 HITCH: WELDED W/2 5/16" CUP AND JACK W/BARGEMAN PLUG  
 AXLES: 3, 500# SINGLE LEAF DROP 5 LUG AXLES WITH WHEELS WELLS  
 TIRES: 5 LUG WHITE SPOKE 15" RIMS WITH 10" HUBS  
 PAINT: MIN 3 MIL BLACK ASPHALT  
 TIE DOWNS: FRAME TIES, IF REQUIRED, ON SITE BY OTHERS  
 MISC: 1 SWIVEL RV STEP

**FLOOR – TRANSVERSE**

BOTTOM BOARD: WOVEN PLASTIC INSULATION SUPPORT  
 NOTE: FASTENED TO BOTTOM OF JOISTS 24" O. C. MAX  
 INSULATION: R-12 UNFACED FIBERGLASS  
 JOISTS: 2X4 #3 SPF EQUAL OR BETTER @ 16" O. C. (TRANSVERSE)  
 RIM JOIST: 2X4 #3 SPF EQUAL OR BETTER  
 DECKING: 5/8" (19/32") T&G DOUGLAS FIR PLYWOOD 16" O. C. MIN. SPAN INDEX  
 COVERING: PAINTED  
 COVER WHEEL WELLS WITH PAINTED PLYWOOD  
 (COLOR = GRAY )  
 MISC:

**EXTERIOR WALLS**

STUDS: 2X4 STUD GRADE SPF EQUAL OR BETTER @ 16" O. C.  
 BOTTOM PLATE: SINGLE 2X4 #3 SPF EQUAL OR BETTER  
 TOP PLATE(S): SINGLE 2X4 #3 SPF EQUAL OR BETTER  
 WALL HEIGHT: 7' -0"  
 WALL COVERING: 1/4" NATURAL BIRCH PANELING (CLASS C/3 F. S.)  
 INSULATION: R-12 UNFACED FIBERGLASS BATTS  
 SHEATHING: 3/8" OSB FULL PERIMETER  
 SIDING: .019 ALUMINUM  
 (COLOR = COLONIAL WHITE -SMOOTH )  
 NOTES: SCREW EVERY MESA  
 TRIM: .019 ALUMINUM (TOP, BOTTOM AND CORNERS)  
 (COLOR = EARTH BROWN- RCE )  
 MISC: ANSI CONSTRUCTION

**INTERIOR TRIM**

TRIM: STANDARD WOOD PROFILES  
 TRIM: 4" VINYL COVE BASE (COLOR = #P100 BLACK )

**ROOF**

RAFTERS: BOW TRUSSES @ 16" O. C. W/30# LIVE LOAD  
 2 1/2 " HEEL X 6 1/4" CROWN 94 - 1/2" LONG TRUSS# H0994T0686  
 CEILING PANEL: 1/2" PREFINISHED GYPSUM W/VAPOR BARRIER (CLASS A/1 F. S.)  
 INSULATION: R-12 INSULATION  
 ROOFING: 30 GA GALVANIZED (CLASS C/3 F. S.)  
 GUTTERS: K-60 J-RAIL

**EXTERIOR DOORS**

A: 1 36X80 ELIXER #402-10 VINYL CLAD DOOR W/ALUM. FRAME,  
 10X10 SAFETY GLAZED LITE, LOCKWARE #5401 KNOB LOCK SET, DRIP CAP,  
 WEATHER STRIPPING, STAY-CHAIN AND THRESHOLD. (COLOR = COLONIAL WHITE)

**WINDOWS**

1: 3 HORIZONTAL SLIDER 46X27 W/SINGLE CLEAR GLASS,  
 ALUM. EXTRUDED MILL FRAME, DRIP CAP, BUG SCREEN AND  
 SELF STORING STORMS W/WHITE FRAME

**ELECTRICAL**

ALL ELECTRICAL TO MEET CSA STANDARDS  
 SERVICE: 120/240V SINGLE PHASE, 3 WIRE, 60HZ W/GROUND  
 LOAD CENTER: 1 24 CIRCUIT WITH MAIN 100AMP BREAKER #CQ0124M125C100  
 NOTE: CSA HEIGHT TO BE 36" TO BOTTOM.  
 ENTRANCE: 1 1/2" EMT CONDUIT STUB THRU SIDEWALL  
 RACEWAY: MIN. #14 AWG NM UP TO 40A. > 40A IN SE TYPE WIRE. (CSA)  
 LIGHTS: 2 4' 2 32W T8-TUBE FLUOR. W/DIFFUSER & ELECTRONIC BALLAST  
 W/LUMINAIR DISCT. (SB 232 120 RE)  
 CSA, SWITCHES AND RECEPT GROUND TO J-BOX  
 RECEPTACLES: 4 120V 15A IVORY DUPLEX GROUNDING TYPE # 5320ICP  
 RECEPTACLES: 1 SEE COOLING CALL OUT FOR A/C RECEPT REQUIREMENTS  
 SWITCHES: 1 120V 15 AMP IVORY TOGGLE TYPE #CSB115I  
 MISC: INSTALL CLEARANCE LIGHTS

**HVAC**

HEATING: 2 4' 1KW 120 VOLT BASEBOARD HEATER  
 THERMOSTAT: 1 120V WALL MOUNT #MS26  
 COOLING: 1 5000 BTU 120V THRU-WALL AIR CONDITIONER (PERFECT AIR PAC 5,000)  
 W/ 20A IVORY SINGLE GROUNDING TYPE A/C RECEPT # 58011

**SPECIALTIES**

DESKTOP: 1 24" x 48" HPL DESKTOP PER PRINT  
 (HPL COLOR = BLACK PEARL w/T MOLDING)  
 FILE CABINETS: 1 STANDARD (2) DRAWER (1) CABINETS AT EACH DESK  
 EXTINGUISHER: IF REQUIRED BY OTHERS AT SITE

**Building Notes:**

- All materials are C and B Custom Modular's standards unless otherwise specified.
- All door adjustments are on site by others.
- C and B Custom Modular Inc. is not responsible for local codes or permits.
- Construction type trailer

VIN#  
 16-19582 = RP9FT1617GA028059  
 16-19583 = RP9FT1613GA028060

**Drawing Index**

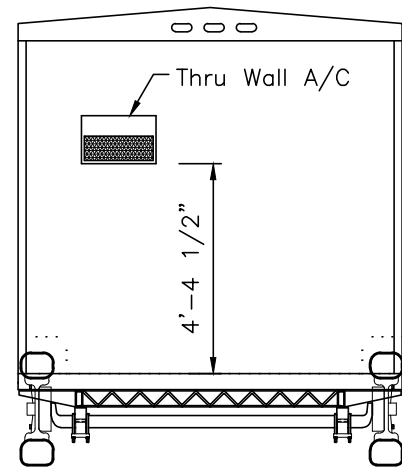
Page	Page Description
C1	Project Cover Sheet/Building Specs
A1	Building Elevations/ Cross Section
A2	Production Floor Plan
S3-S4	Production Frame & Floor Framing Plans

ID	Revision	Date

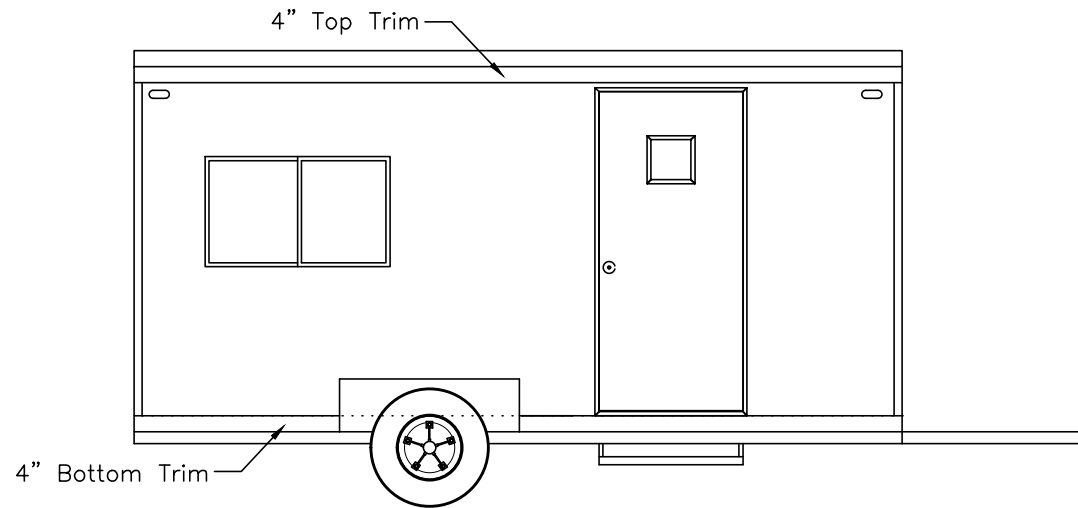


2224 Bloomingdale Drive  
 Bristol, Indiana 46507  
 PH: (574) 848-7300  
 FX: (574) 848-1950  
 C & B  
 MODULAR, INC.

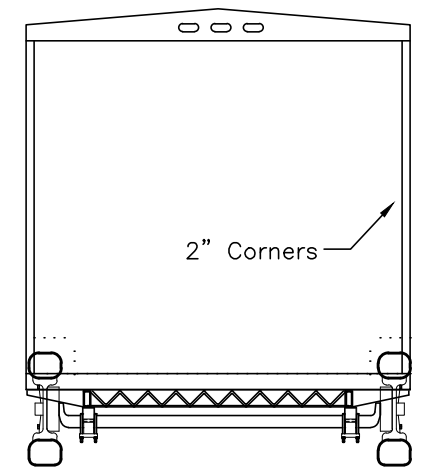
Scale: N/A	Drawn: Becky B.	Date: 10/20/2016	Plot Date: Oct 28, 2016
Serial Numbers: 16-19582-83	Drawing Number: 1388	DWG File Name: 16-19582-83.dwg	
Approval Numbers: QPS-Electric	Sales Representative: Lewis Chadwick		
Title: Armstrong Trailer 8 x 20 Office (8'-0" x 16'-0")			
Sheet Description: Building Cover Sheet			Page #: C1



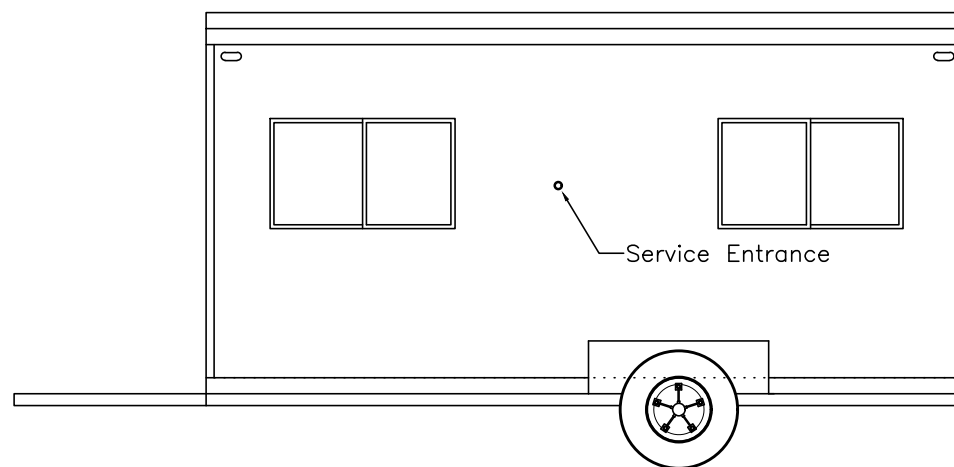
**Elevation "D"**



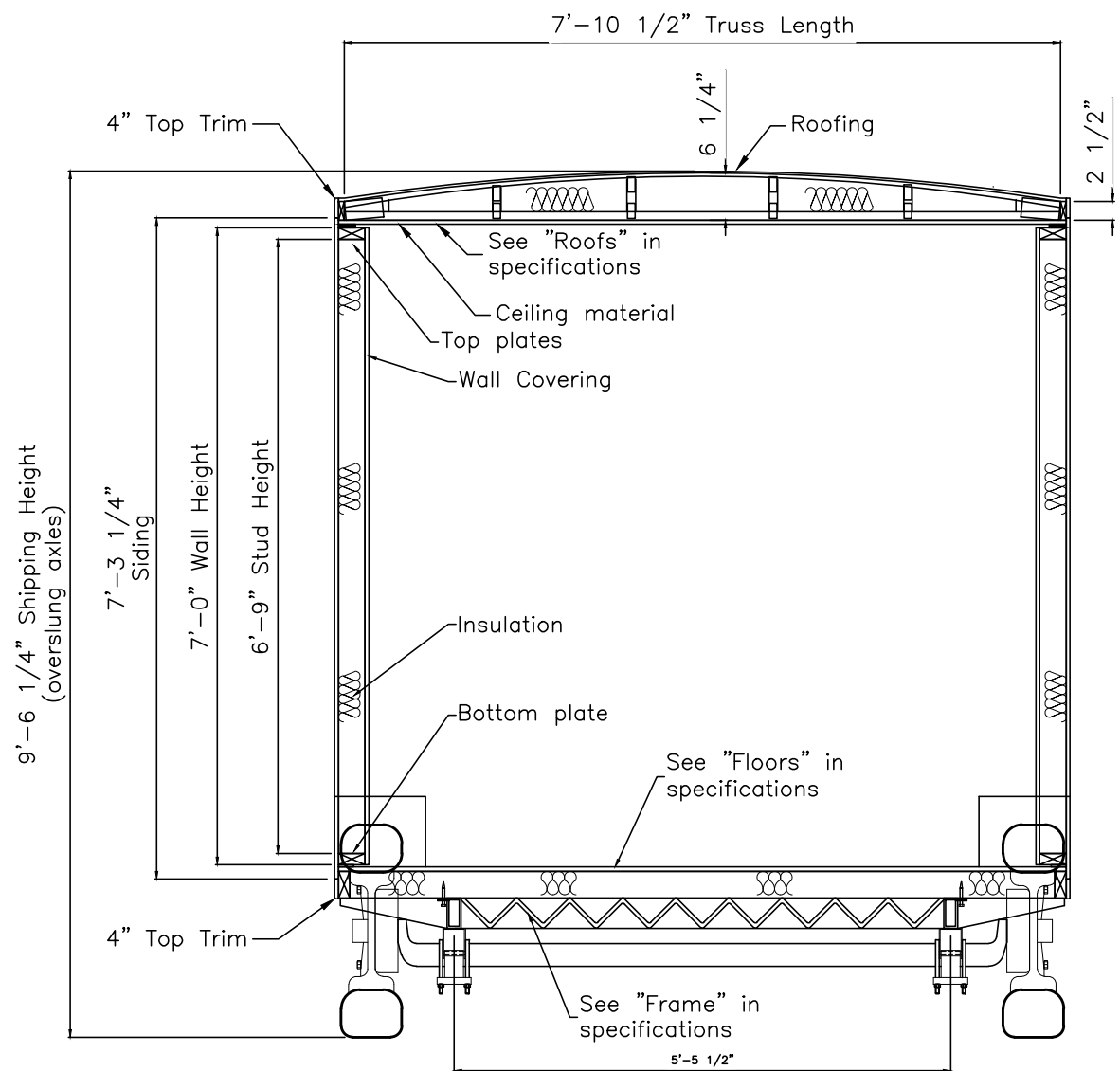
**Elevation "A"**



**Elevation "B"**



**Elevation "C"**



**ARMSTRONG**  
 Manufactured Homes - Office Trailers

2224 Bloomingdale Drive  
 Bristol, Indiana 46507  
 PH: (574) 848-7300  
 FX: (574) 848-1950  
 C & B  
 MODULAR, INC.

ID	Revision	Date	
Scale: Noted	Drawn: Becky B.	Date: 10/20/2016	Plot Date: Oct 28, 2016
Serial Numbers: 16-19582-83	Drawing Number: 1388	DWG File Name: 16-19582-83.dwg	
Approval Numbers: QPS-Electric	Sales Representative: Lewis Chadwick		
Title: Armstrong Trailer 8 x 20 Office (8'-0" x 16'-0")			
Sheet Description: Building Cross Section & Elevations			Page #: A1

Modul A Area Served Sq. Meter 11.89158912 ft<sup>2</sup> Area served Main Breaker 100A Panel Voltage 240 Panel Phase 1

CKT#	Breaker size	Description	QTY	Voltage	Wattage per item	Connected Load	Load Factor	Calculated load	Total
1	15 /1	Lights (2-tube)	2	120	71.2	142.4	1.25	178	
		Exterior Lights	0	120	75	0	1.25	0	178
2	15 /1	Recepts	4	120	180	720	1.00	720	720
3	20 /1	Baseboard Heater	2	120	1000	2000	1.25	2500	2500
4	20 /1	A/C Recept	1	120	515	515	1.00	515	515

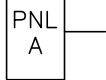
Total connected load	3913.00
Total connected load amps	16.30
Load factor	50 594.58
Appliance Load	3015.00
CEC 2012 Elec Load Amps	15.04

### Wire Size Chart (90° C)

Breaker Size	Wire Size	Breaker Size	Wire Size
15A	#14	80A	#4
20A	#12	90A	#3
30A	#10	100A	#3
40A	#8	115A	#2
50A	#6	130A	#1
60A	#6	150A	1/0

### DRAWING LEGEND

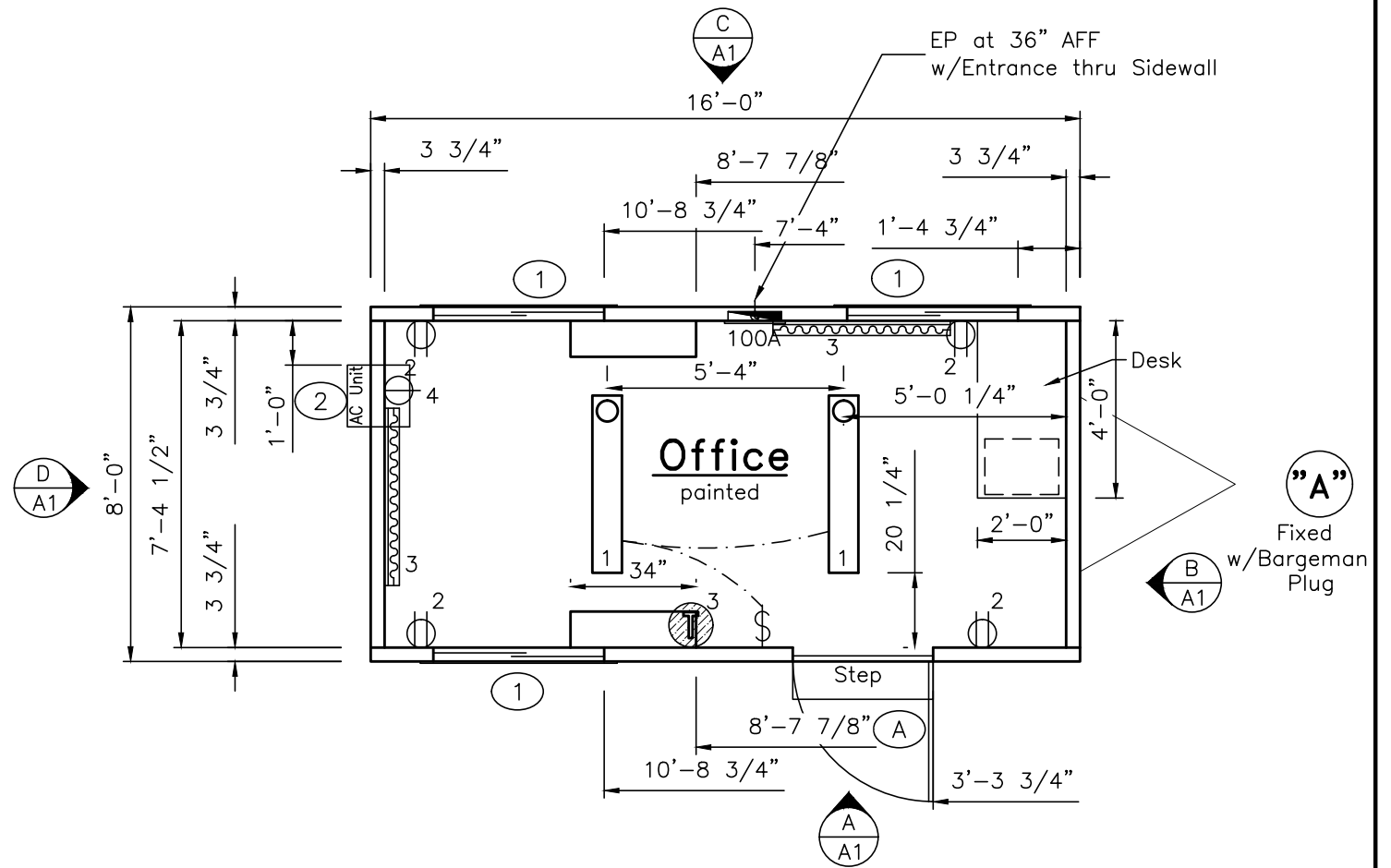
SYMBOL	QTY.	DESCRIPTION
	1	120/240 electric panel (+36" AFF to bottom of panel)
	1	120V thermostat (+48" AFF to top)
	4	120V ivory duplex grounding type (+18" AFF unless noted)
	1	120V ivory single grounding type for A/C (+44" AFF unless noted)
	1	120V ivory toggle type (+42" AFF unless noted)
	2	120V 4' (2) tube surface mount w/diffuser
	2	120V 1KW Electric 48" Baseboard heater (+4" A.F.F.)



A **120/240v 1PH 60HZ PANEL**  
**100A 2-pole breaker**  
 1 1/2" EMT conduit  
 (3) #3 T90 feeders  
 #8 GRND

### Electrical Riser Diagram

NTS



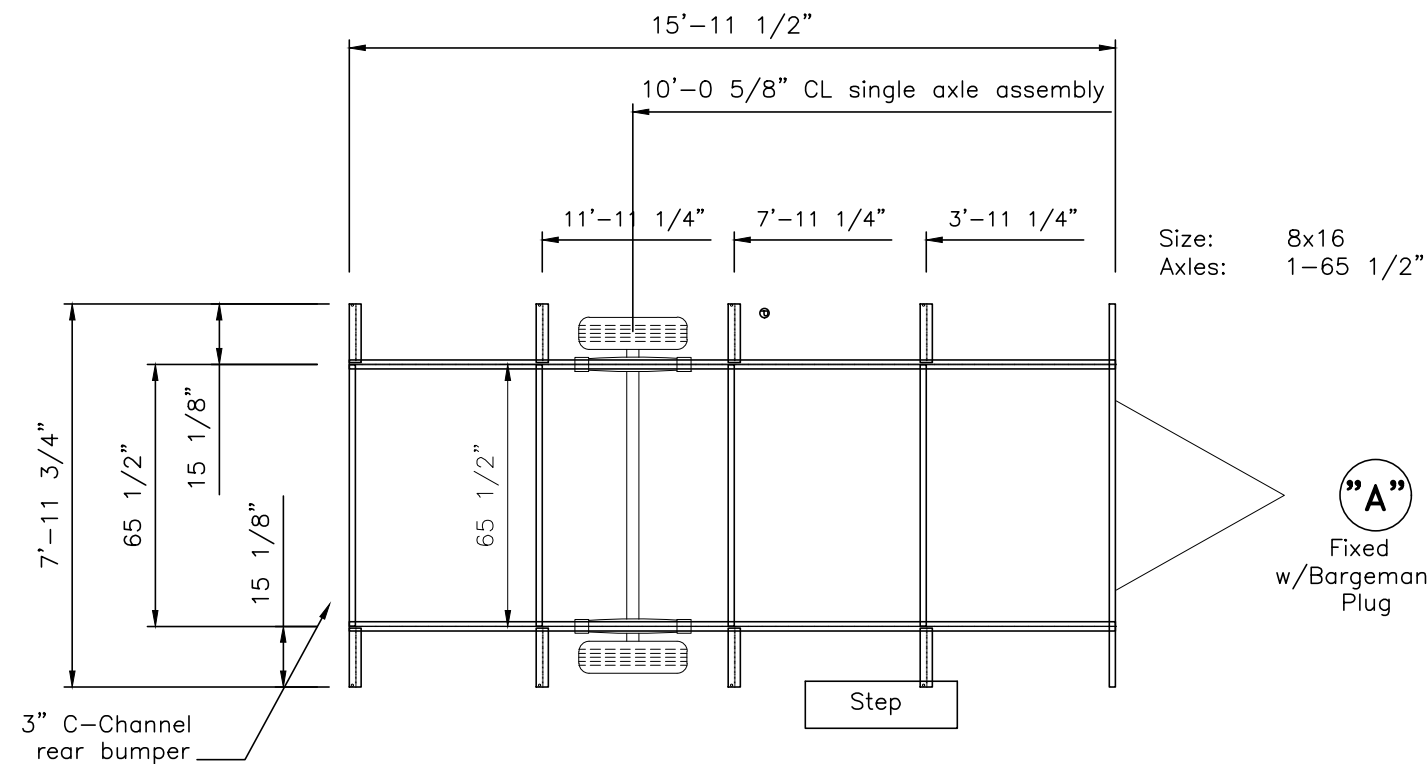
### DOOR, WINDOW AND OPENING SCHEDULE

SYMBOL	QTY.	DESCRIPTION	ROUGH OPENING
A	1	Door: 36x80 Elixer vinyl clad door w/10x10 sg-lite Handle: Knob keyed lock set Other: Drip cap, threshold, weather stripping Frame: Aluminum Closer: Stay Chain	36 x 80
1	3	Window: Horizontal Slider 46x27, single clear glass Frame: Aluminum extruded (Mill Finish) Acc. bug screen, and self storing storms, w/WHITE frame	46 1/2 x 27 1/4 UP 41 1/4
2	1	Window: 5,000 BTU 120V Thru wall Air Conditioner Frame: Acc.	16 3/4 x 12 3/4 up 52 1/2" A.F.F.

**ARMSTRONG**  
 Manufactured Homes - Office Trailers

2224 Bloomingdale Drive  
 Bristol, Indiana 46507  
 PH: (574) 848-7300  
 FX: (574) 848-1950  
 C U S T O M O M O D U L A R , I N C .

ID	Revision	Date
Scale: 1/4" = 1'-0"	Drawn: Becky B.	Date: 10/20/2016
Plot Date: Oct 28, 2016	Serial Numbers: 16-19582-83	Drawing Number: 1388
DWG File Name: 16-19582-83.dwg	Approval Numbers: QPS-Electric	Sales Representative: Lewis Chadwick
Title: Armstrong Trailer 8 x 20 Office (8'-0" x 16'-0")		
Sheet Description: Production Floor/Electrical Plan		Page #: A2

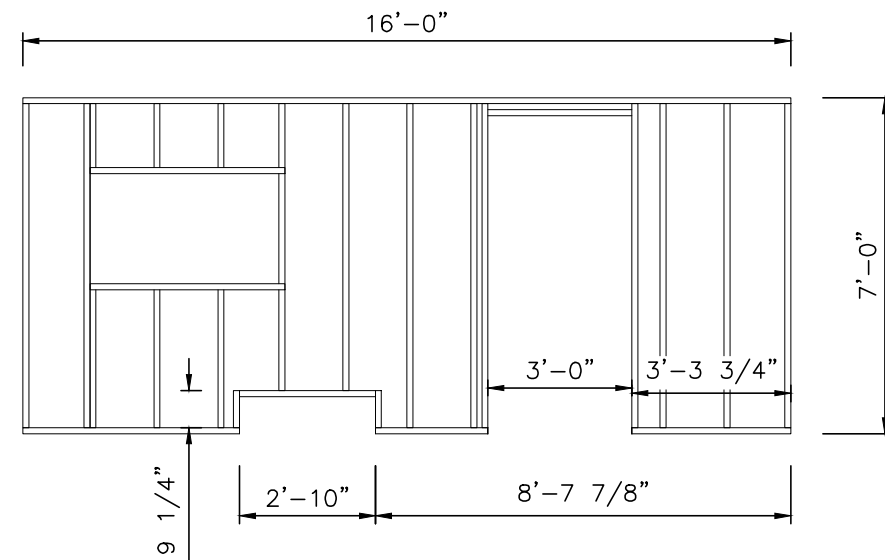


DRAWING		LEGEND
SYMBOL	QTY.	DESCRIPTION

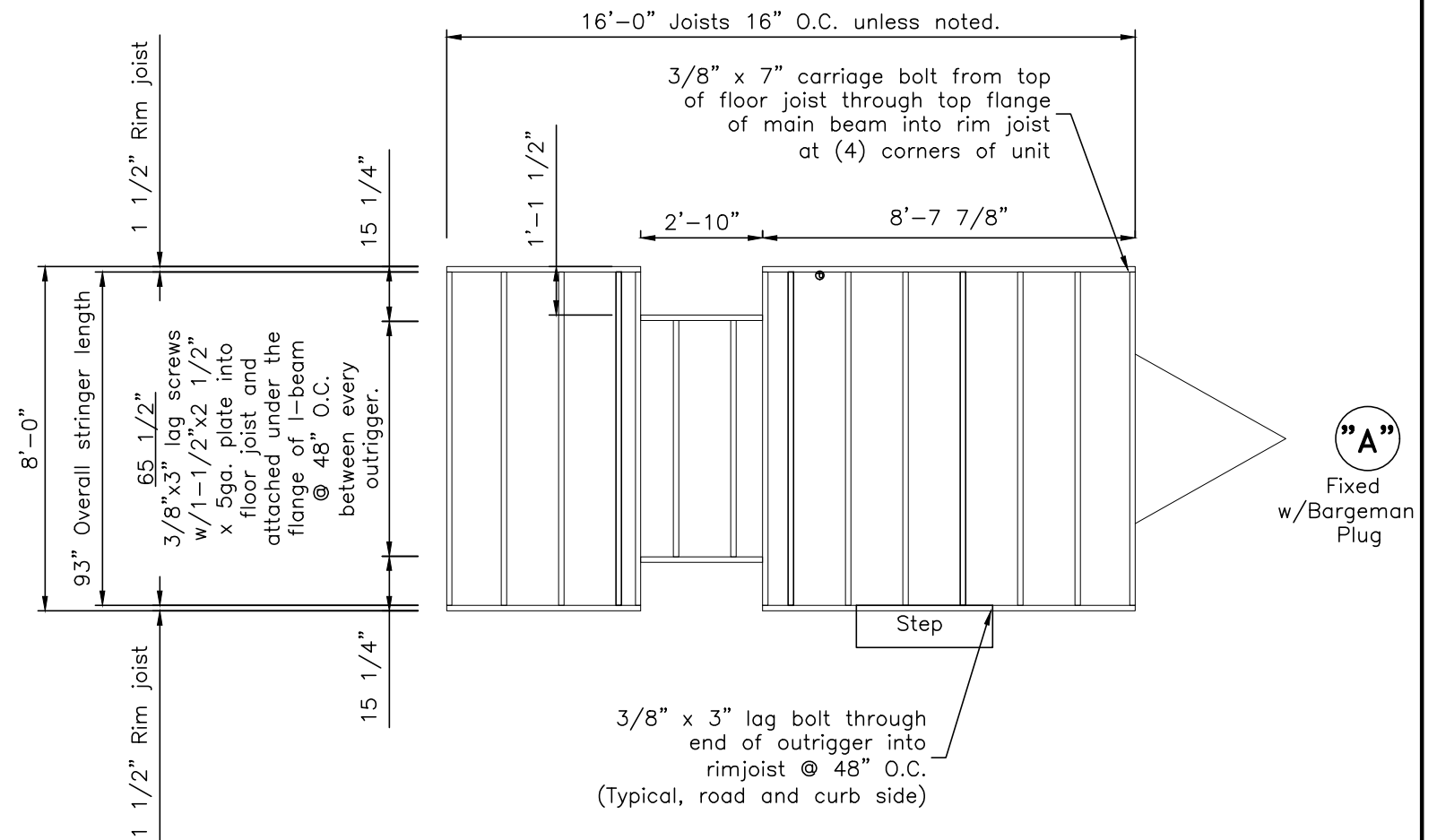
ID	Revision		Date

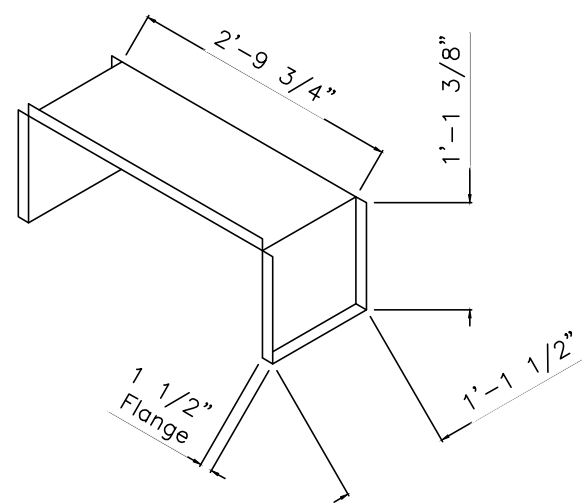
<b>ARMSTRONG</b> Manufactured Homes - Office Trailers		Scale: 1/4" = 1'-0"	Drawn: Becky B.	Date: 10/20/2016	Plot Date: Oct 28, 2016
2224 Bloomingdale Drive Bristol, Indiana 46507 PH: (574) 848-7300 FX: (574) 848-1950		Serial Numbers: 16-19582-83	Drawing Number: 1388	DWG File Name: 16-19582-83.dwg	
C U S T O M O M O D U L A R I N C. <i>C &amp; B</i>		Approval Numbers: QPS-Electric	Sales Representative: Lewis Chadwick		
Title: Armstrong Trailer 8 x 20 Office (8'-0" x 16'-0")					
Sheet Description: Production Steel Frame Plan					Page #: S3



**Sidewall for Wheel Well Blockout**



DRAWING		LEGEND
SYMBOL	QTY.	DESCRIPTION



**Wheel Well Liner**  
nts

**ARMSTRONG**  
Manufactured Homes - Office Trailers

2224 Bloomingdale Drive  
Bristol, Indiana 46507  
PH: (574) 848-7300  
FX: (574) 848-1950

ID	Revision	Date
Scale: 1/4" = 1'-0"	Drawn: Becky B.	Date: 10/20/2016
Plot Date: Oct 28, 2016	Serial Numbers: 16-19582-83	Drawing Number: 1388
DWG File Name: 16-19582-83.dwg	Approval Numbers: QPS-Electric	Sales Representative: Lewis Chadwick
Title: Armstrong Trailer 8 x 20 Office (8'-0" x 16'-0")		
Sheet Description: Production Floor Framing Plan		Page #: S4