

# MAPLE LEAF HOMES



Modular  
Homes

**Bungalow  
Split Entry**

MAPLE LEAF  HOMES

# MAPLE LEAF HOMES

Every Maple Leaf Home is manufactured with high quality materials by experienced craftsmen. You can take comfort in knowing that your investment will be protected by some of the best warranties in the Industry.

- One year Maple Leaf Home manufacturer's warranty against defects in materials and workmanship.
- Limited lifetime warranty on roofing shingles provided by shingles manufacturer.
- Limited lifetime warranty on vinyl siding provided by siding manufacturer.
- Limited lifetime warranty on fixtures provided by fixtures manufacturer.
- Limited lifetime warranty available on windows by the window manufacturer.
- 10 year limited structural warranty available through Atlantic Home Warranty Corporation (available in Atlantic Canada).



# WHY CHOOSE A MAPLE LEAF HOME?



- Locally owned and operated since 1985
- Award winning manufacturer for energy efficiency and customer satisfaction
- Industry leading manufacturer of energy efficient homes
- Energuide and Energy-Star certified builder
- Over 30 convenient locations to serve you better throughout Atlantic Canada, Quebec, Ontario and the New England States
- The most comprehensive warranties in the industry to protect your investment
- High quality custom cabinetry and interior finishes
- Efficiently manufactured indoors in a controlled environment
- In-plant quality control for every step of the manufacturing process ensures a top quality product that meets or exceeds the most up to date building codes
- Accurate scheduling – no weather delays
- No cost overruns – no waiting for sub contractors
- Environmentally friendly production – waste is reduced and recycling is maximized
- Plywood floor and wall construction
- Pre-engineered and individually custom built
- Premium building materials to assure top performance and service
- Professionally designed plans to ensure functionality for comfortable living
- Quality and innovations that are responsive to your living needs and wishes
- Custom designed plans

## All Maple Leaf Homes include these standard features:

- Limited lifetime warranty on roof shingles
- Limited lifetime warranty on vinyl siding
- High quality designer cabinets
- Kiln dried lumber
- Quality plumbing fixtures
- Plywood floor and wall construction
- Painted wood interior trim (no MDF)
- Energy efficient
- 30 year warranty on windows

# HOMESTEAD

BUNGALOW / RANCH

2 BEDROOMS  
2 BATHROOMS

1,462 SQUARE FEET  
50' x 32'  
DIMENSIONS

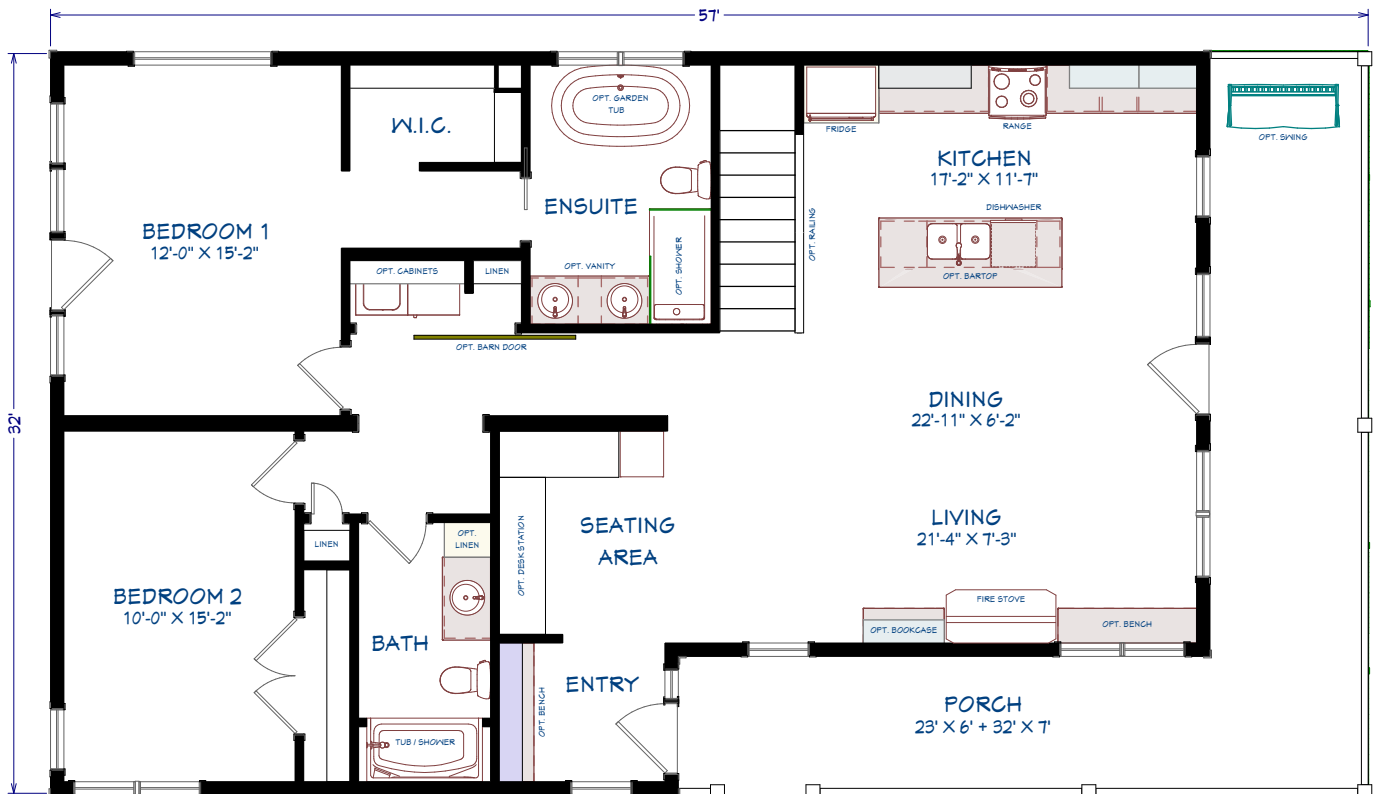


## OPTIONS

Diamond kote board & batten siding  
Casement windows c/w black out & inside trim  
Garden doors c/w black out & inside trim  
96" High 5 panel interior doors  
Custom desk & bar  
Window seat & bookcase around fireplace  
Wood burning fireplace w/ stone & custom mantel  
Upgraded lighting throughout – w/ interior & exterior downlights in various areas

Front entry bench w/ coat hooks  
Cedar porch swing  
Rustic 7" wide hardwood flooring  
84" Custom barn door painted "old blue jeans"  
9'-0" Ceiling  
Roof extension over bedroom #1 garden door  
Upgrade plumbing fixtures and faucets  
Appliances

\* Some items shown may be an option.



2 BEDROOMS, 2 BATHROOMS

1462 FINISHED SF  
362 PORCH SF  
1824 TOTAL SF

COUNTRYVIEW  
BUNGALOW / RANCH

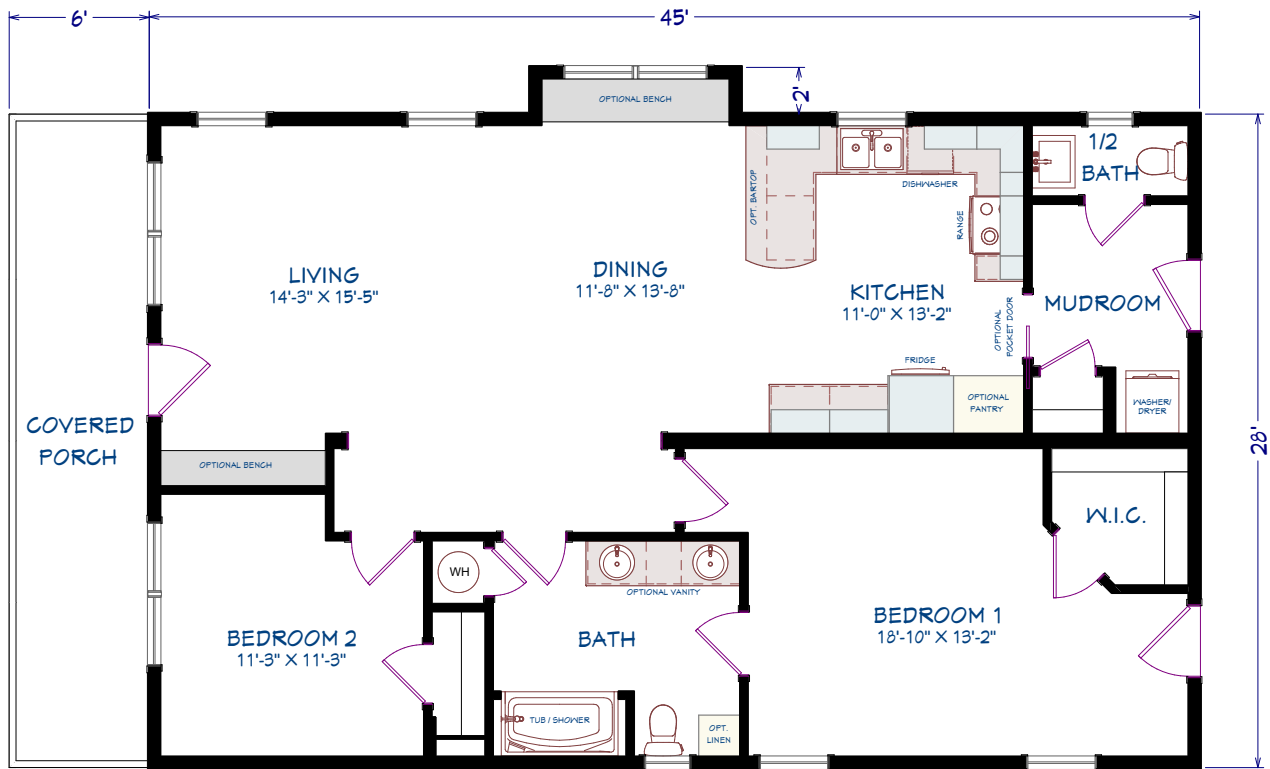


2 BEDROOMS  
1.5 BATHROOMS

1,260 SQUARE FEET  
45' x 28' DIMENSIONS

OPTIONS

- Upgrade vinyl siding w/ eastern white cedar shingles
- Custom windows c/w black outside trim & white inside trim
- Custom exterior doors c/w black outside trim & white inside trim
- Craftsman smooth interior doors c/w upgrade hardware
- Flat stock interior trim w/ extended window sills
- Upgrade lighting package w/ led bulbs
- Custom benches/ storage at front entry & dining room
- Custom craftsman exterior pillars & trim
- Hardwood flooring throughout main living space & bedrooms
- Ceramic tile in bathrooms & rear entry
- Custom roof style w/ walk-up attic for storage
- Upgrade plumbing fixtures & faucets
- Upgrade kitchen cabinets & hardware
- Appliances



2 BEDROOMS, 1.5 BATHROOMS  
1260 SQ FT

# ML201

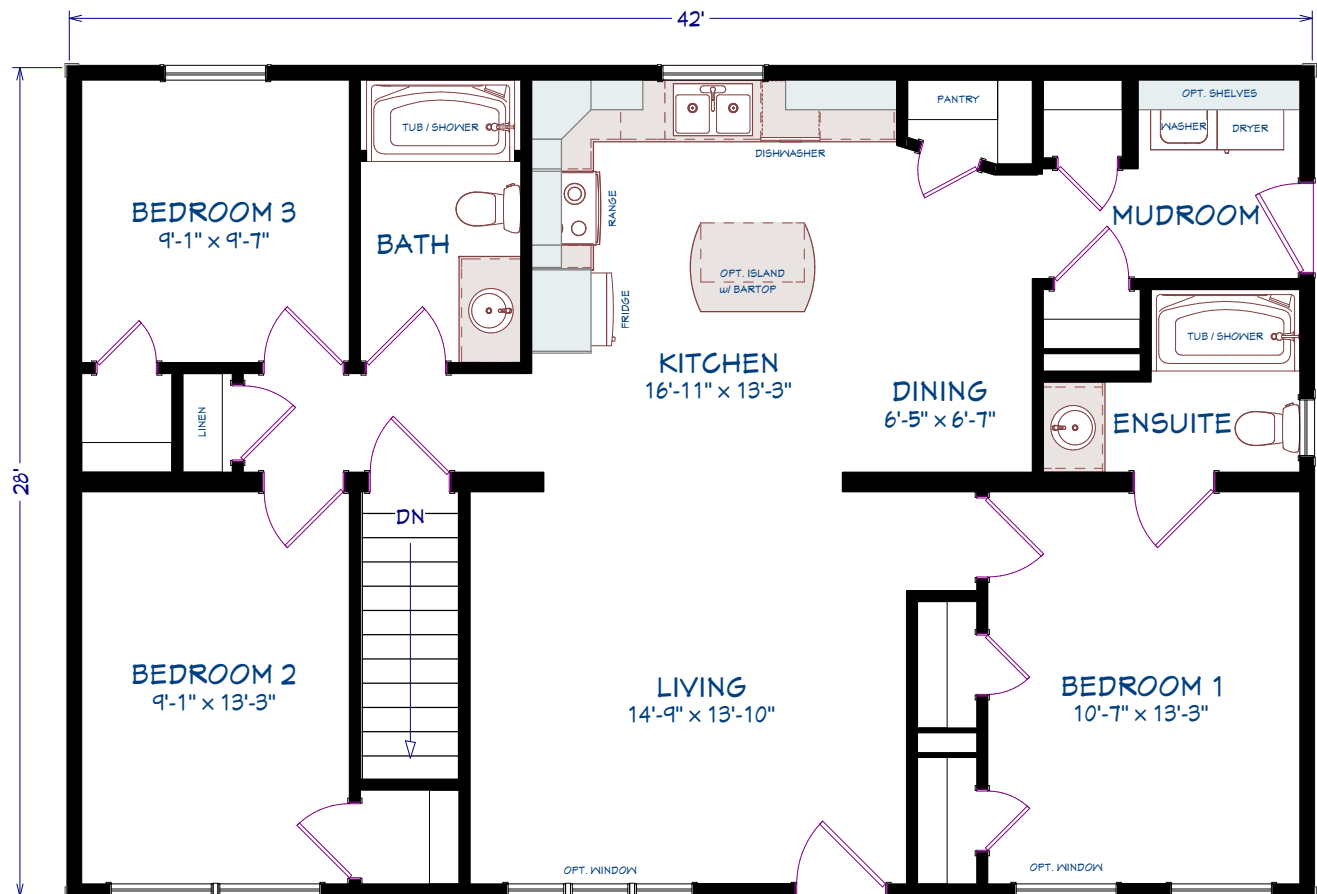
BUNGALOW / RANCH



3 BEDROOMS  
2 BATHROOMS  
1,176 SQUARE FEET  
42' x 28' DIMENSIONS

## OPTIONS

Large dormer  
Mulled living room window  
Second coach light  
Upper window grills  
Second bedroom 1 window  
3 1/2" Window trim  
Appliances



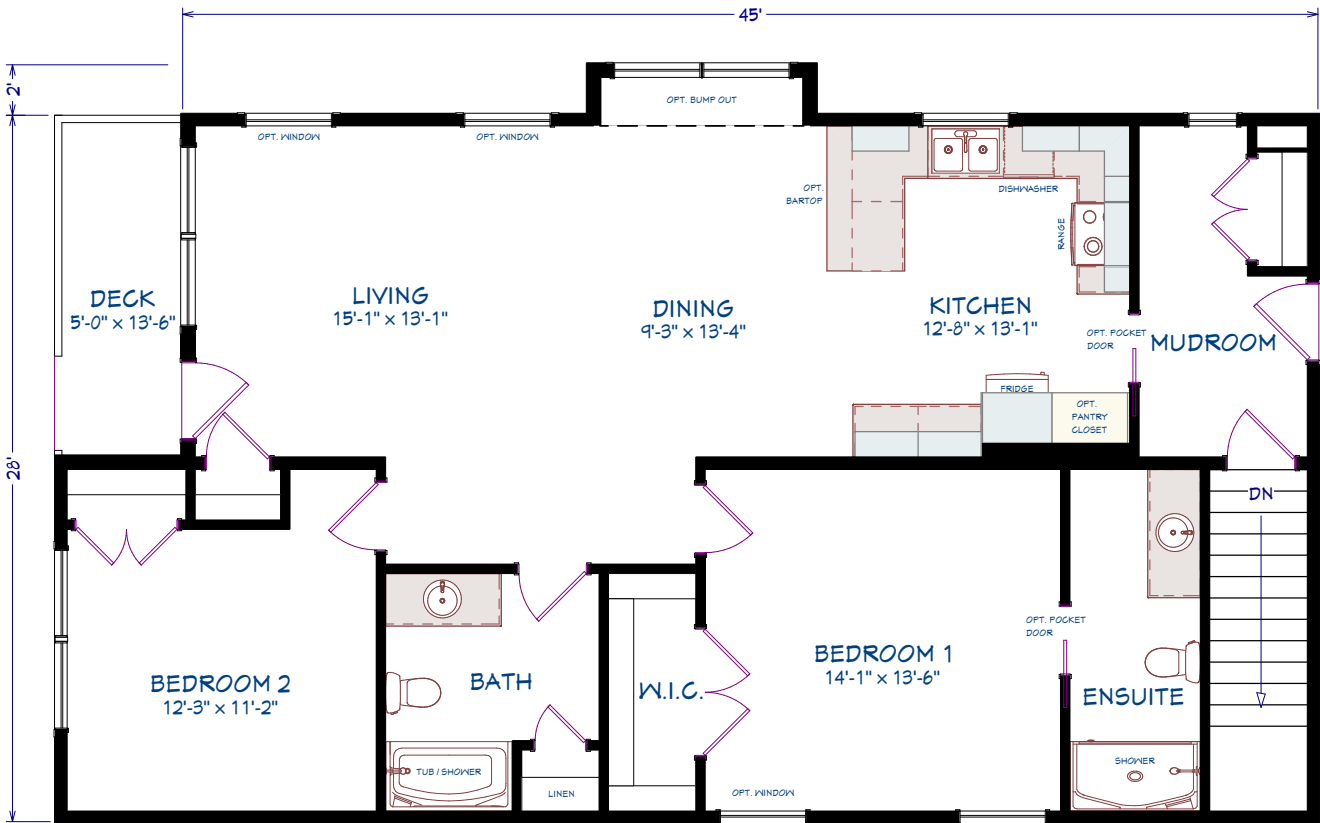
3 BEDROOMS, 2 BATHROOMS  
1176 sq ft

ML202  
BUNGALOW / RANCH



2 BEDROOMS  
2 BATHROOMS  
1,329 SQUARE FEET  
45'-50' x 28' DIMENSIONS

- OPTIONS
- 5' Porch and railings
  - Bump out
  - Front door ¾ glass
  - Additional living room windows
  - 3 ½" Window trim
  - Bedroom round top window
  - Upper window grills
  - Small gable round top window
  - Stone vinyl siding
  - Appliances



2 BEDROOMS, 2 BATHROOMS  
1329 sq ft

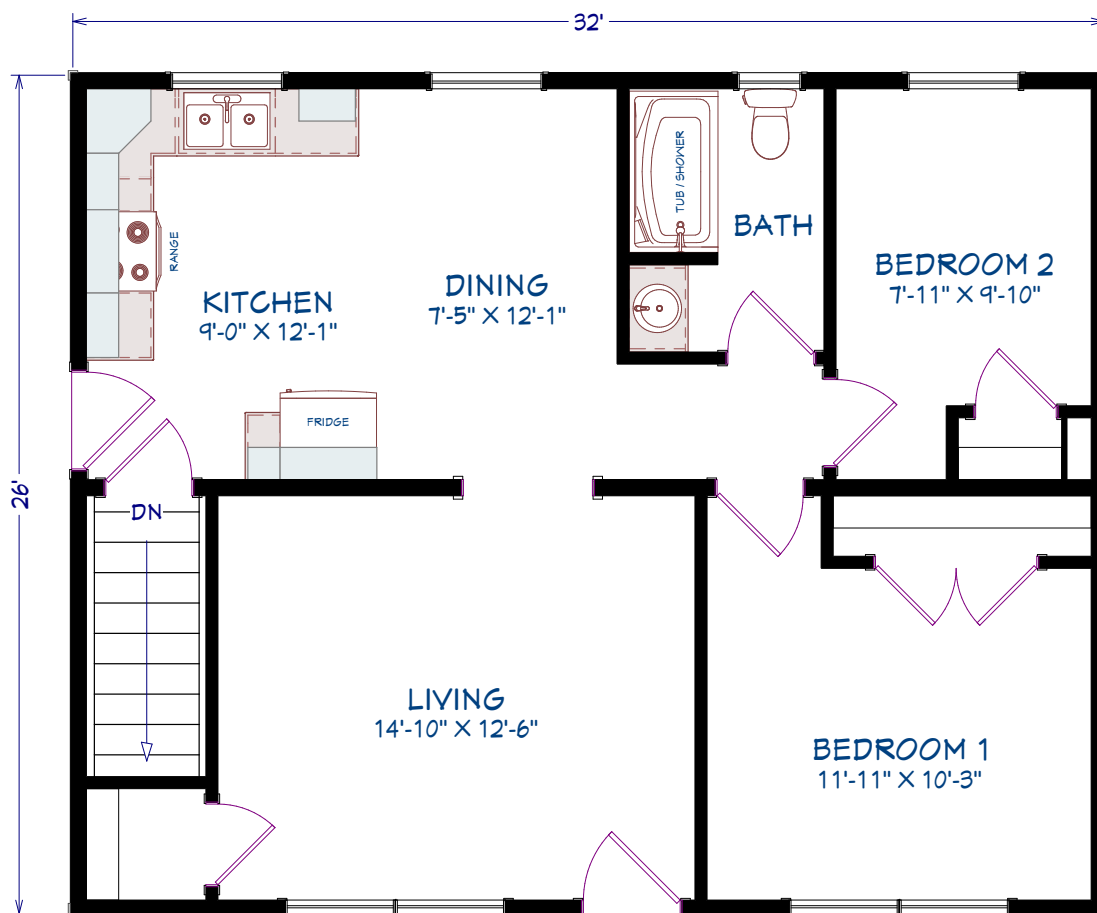
# ML203

BUNGALOW / RANCH



2 BEDROOMS  
1 BATHROOM  
832 SQUARE FEET  
32' x 26' DIMENSIONS

OPTIONS  
Large dormer  
Eyebrow roof  
False pillars  
Front door ¾ glass  
Queen Anne window grills  
3 ½" Window trim  
Extra exterior light  
Appliances



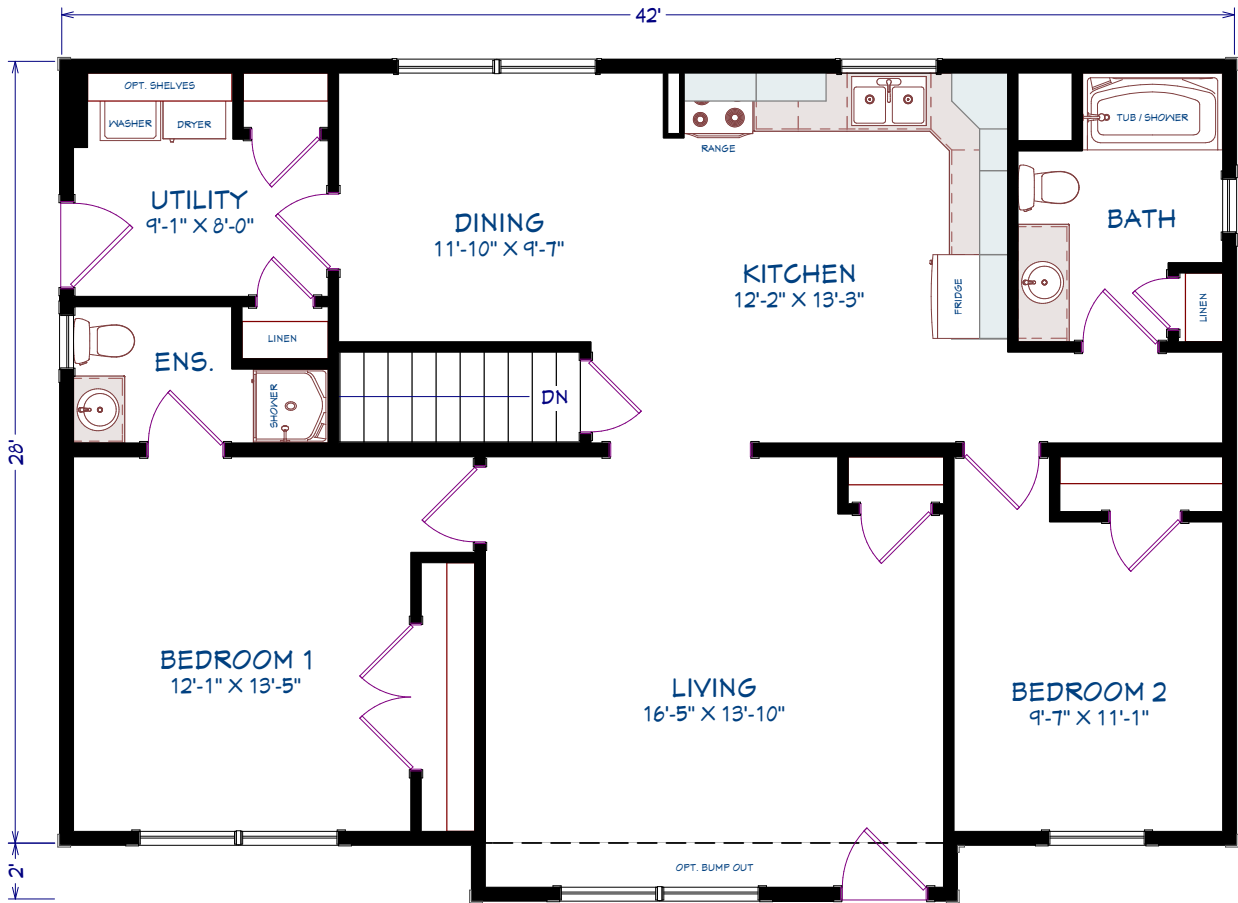
2 BEDROOMS, 1 BATHROOM  
832 SQ FT

ML204  
BUNGALOW / RANCH



2 BEDROOMS  
2 BATHROOMS  
1,176 SQUARE FEET  
42' x 28' DIMENSIONS

- OPTIONS
- Living room bump out
  - Large dormer
  - Eyebrow roof
  - Front door
  - Window grills
  - 5 1/2" Window trim
  - Window grills
  - Shake vinyl siding
  - Appliances



2 BEDROOMS, 2 BATHROOMS  
1176 SQ FT

# ML205

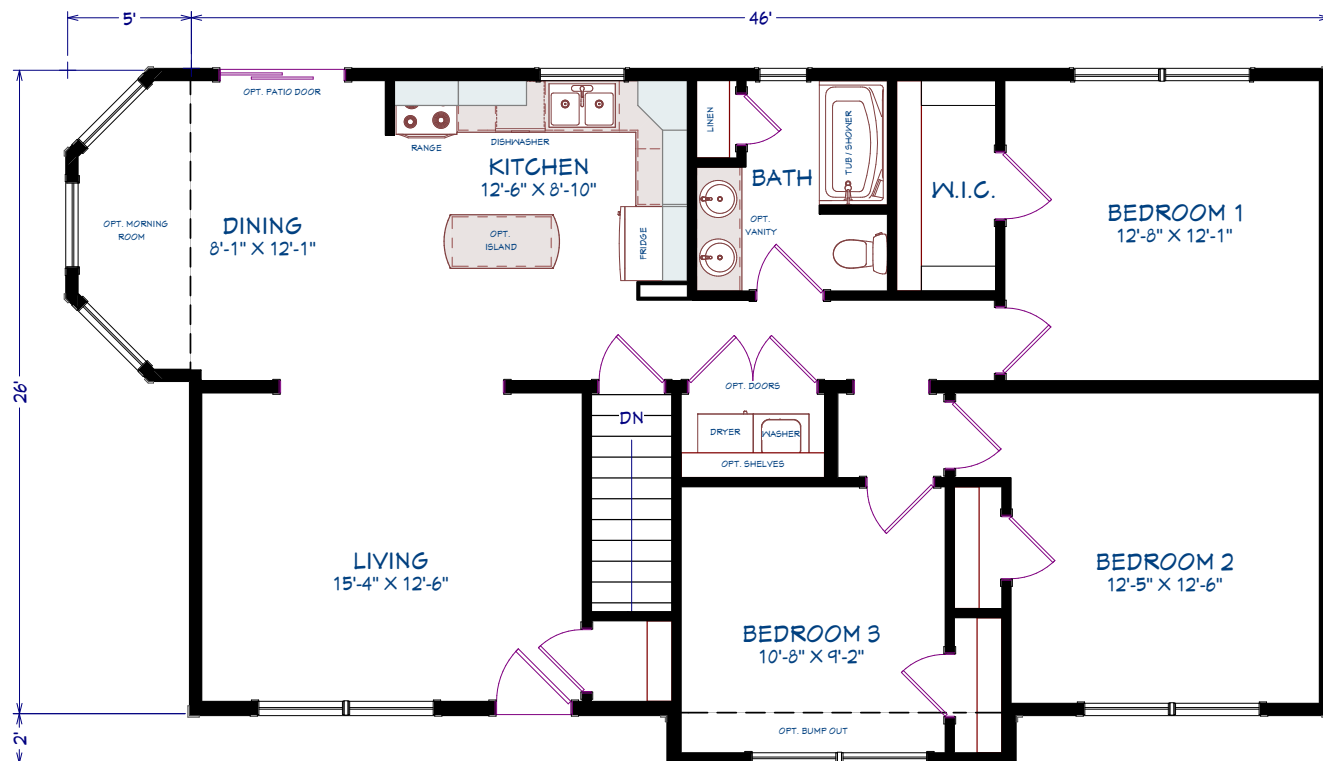
BUNGALOW / RANCH



3 BEDROOMS  
1 BATHROOM  
1,196 SQUARE FEET  
46' x 26' DIMENSIONS

## OPTIONS

Morning room  
Bedroom bump out  
Large dormer  
3 1/2" Window and door trim  
Coloured siding accessories  
Stone vinyl siding  
Appliances  
No window grills



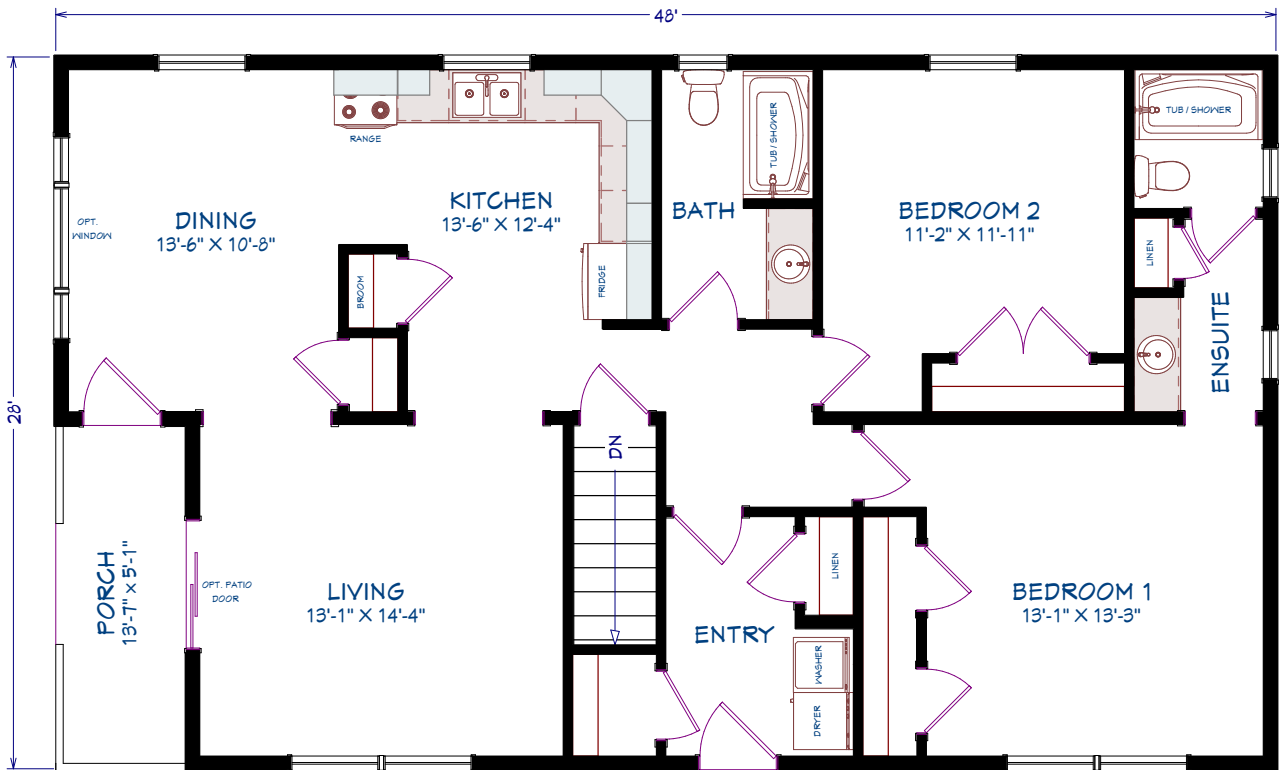
3 BEDROOMS, 1 BATHROOM  
1196 SQ FT

ML206  
BUNGALOW / RANCH



2 BEDROOMS  
2 BATHROOMS  
1,274 SQUARE FEET  
48'43" x 28' DIMENSIONS

- OPTIONS
- Large dormer
  - Eyebrow roof
  - Dustpan roof
  - Rear door glass
  - Window and door colour
  - Coloured siding accessories
  - Patio door
  - Picture window
  - Exterior gable vent
  - Shake vinyl siding
  - Appliances



2 BEDROOMS, 2 BATHROOMS  
1274 SQ FT

# ML207

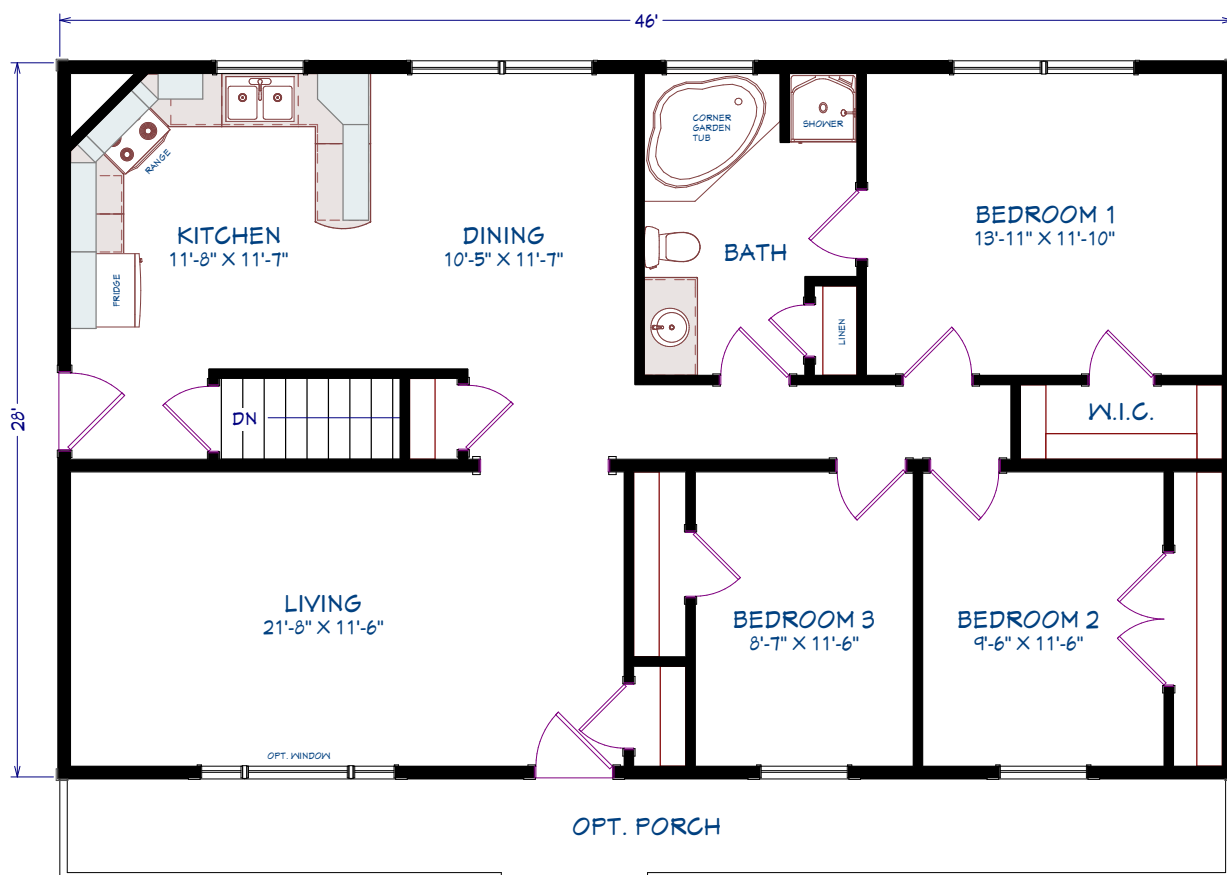
BUNGALOW / RANCH



3 BEDROOMS  
1 BATHROOM  
1,288 SQUARE FEET  
46' x 28' DIMENSIONS

## OPTIONS

Front porch  
Queen Anne window grills  
Full glass front door  
Patio door  
3 ½" Window and door trim  
Appliances



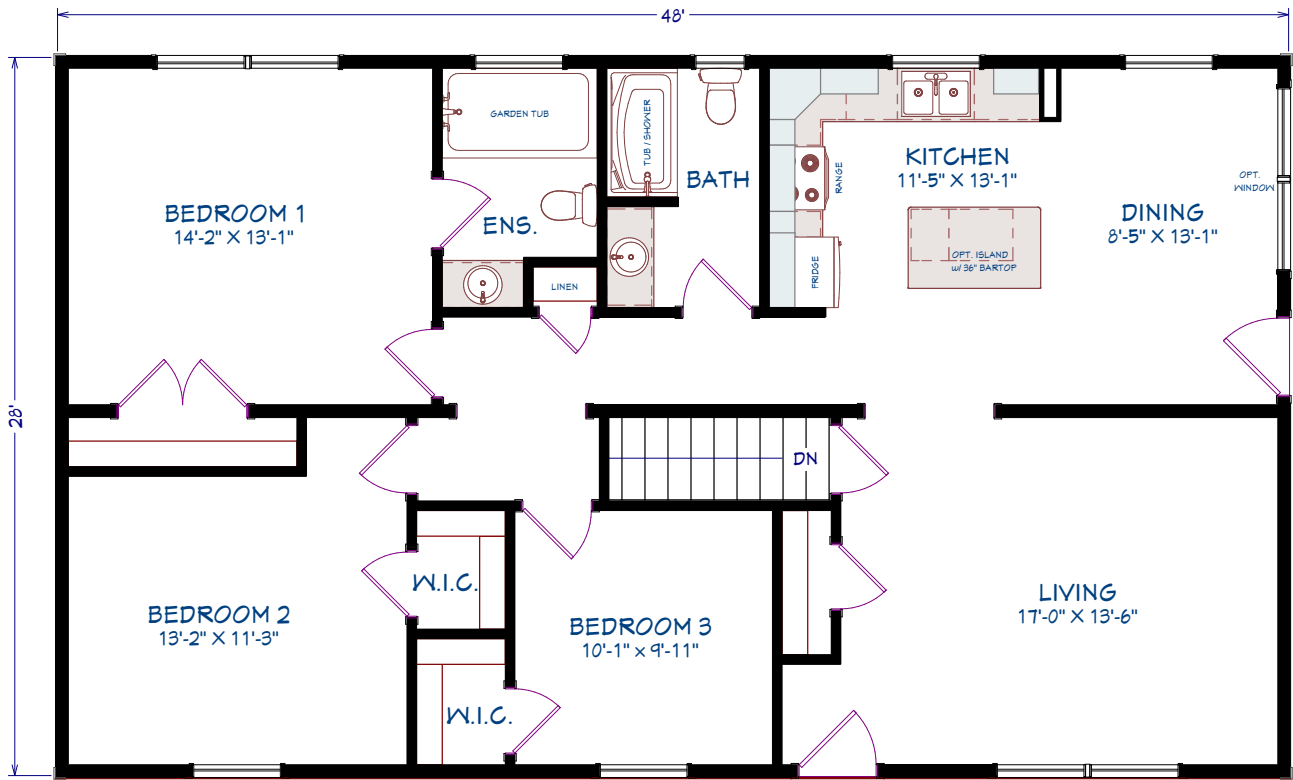
3 BEDROOMS, 1 BATHROOM  
1288 SQ FT

ML208  
BUNGALOW / RANCH



3 BEDROOMS  
2 BATHROOMS  
1,344 SQUARE FEET  
48' x 28' DIMENSIONS

- OPTIONS
- Large dormer
  - Eyebrow roof
  - Octagon louver
  - Front door ¾ glass
  - Window and door trim colour
  - Coloured siding accessories
  - Stone vinyl siding
  - Extra coach light
  - Second dining room window
  - Upper window grills
  - Appliances



3 BEDROOMS, 2 BATHROOMS  
1344 SQ. FT.

# ML209

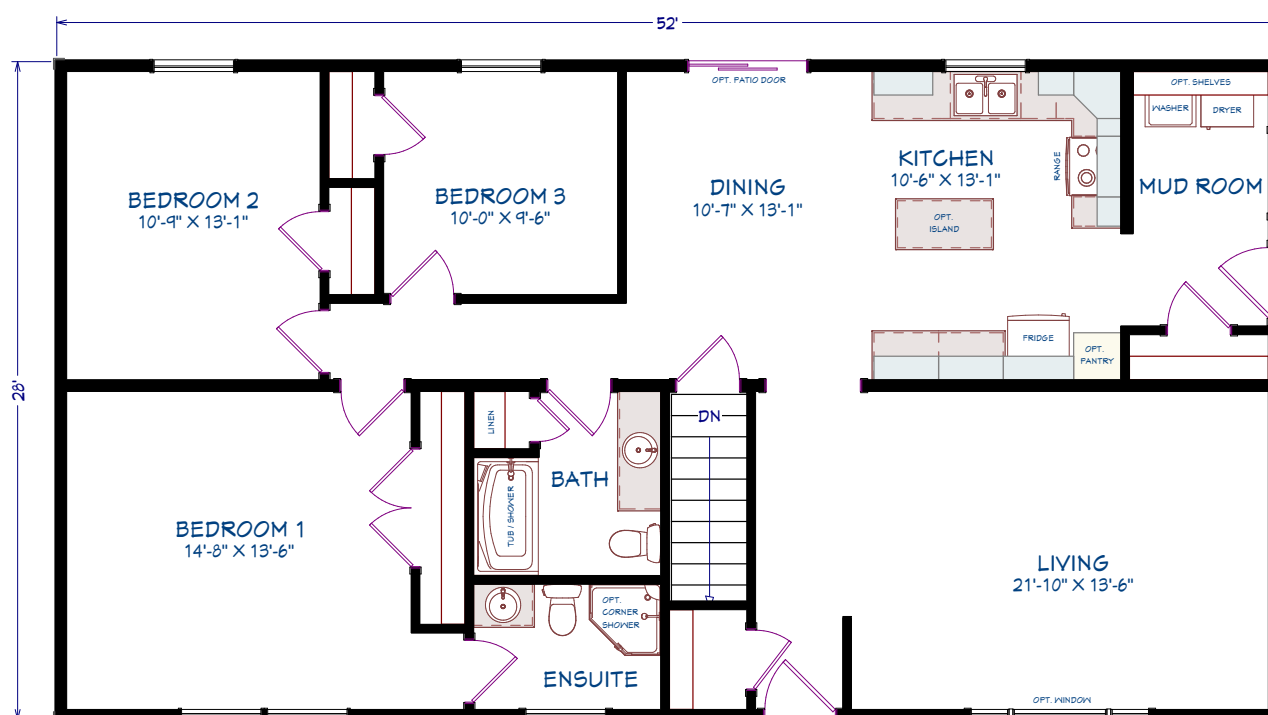
BUNGALOW / RANCH



3 BEDROOMS  
2 BATHROOMS  
1,456 SQUARE FEET  
52' x 28' DIMENSIONS

## OPTIONS

Large dormer  
Eyebrow roof  
Window and door trim colour  
Coloured siding accessories  
Patio door  
Extra coach light  
Second dining room window  
Queen Anne window grills  
Appliances



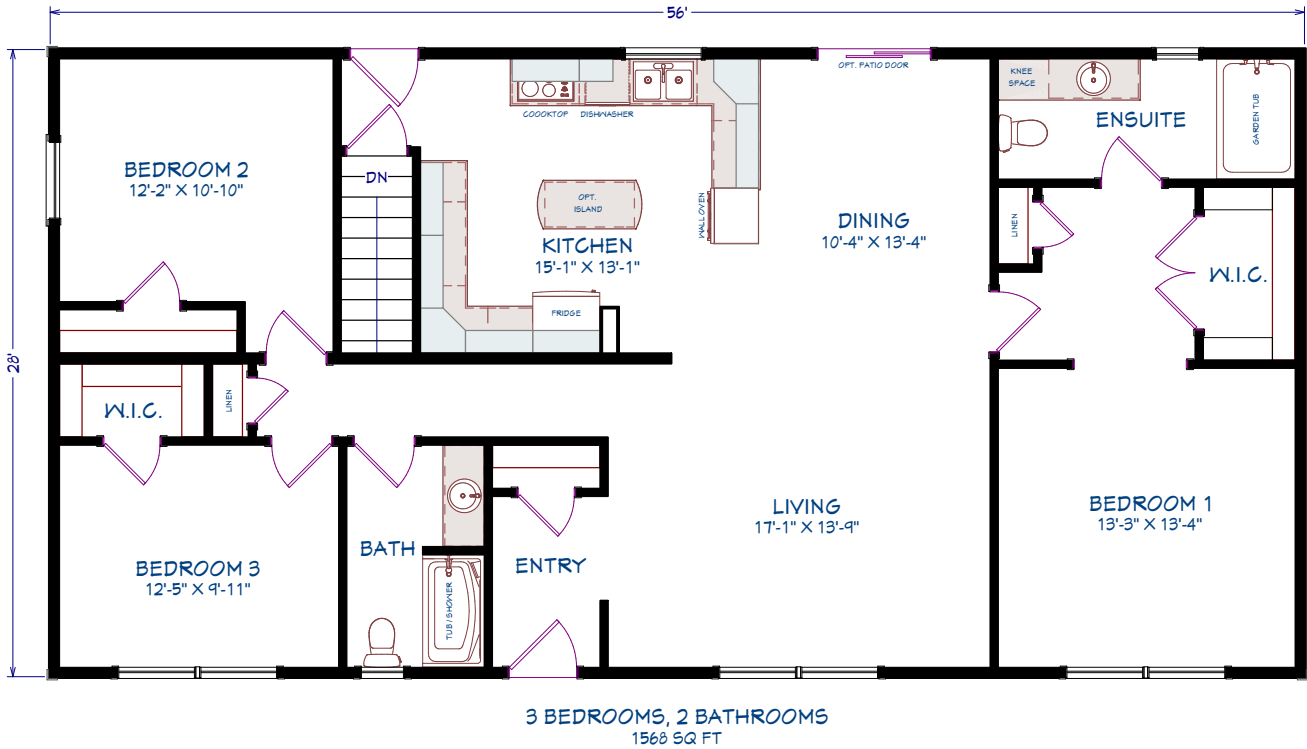
3 BEDROOMS, 2 BATHROOMS  
1456 SQ. FT.

ML210  
 BUNGALOW / RANCH



3 BEDROOMS  
 2 BATHROOMS  
 1,568 SQUARE FEET  
 56' x 28' DIMENSIONS

- OPTIONS  
 Large dormer  
 Small dormer  
 Pillars  
 Front door 3/4 glass  
 Window and door colour  
 Coloured siding accessories  
 Upper window grills  
 5 1/2 Window trim  
 Patio door  
 Appliances



# ML211

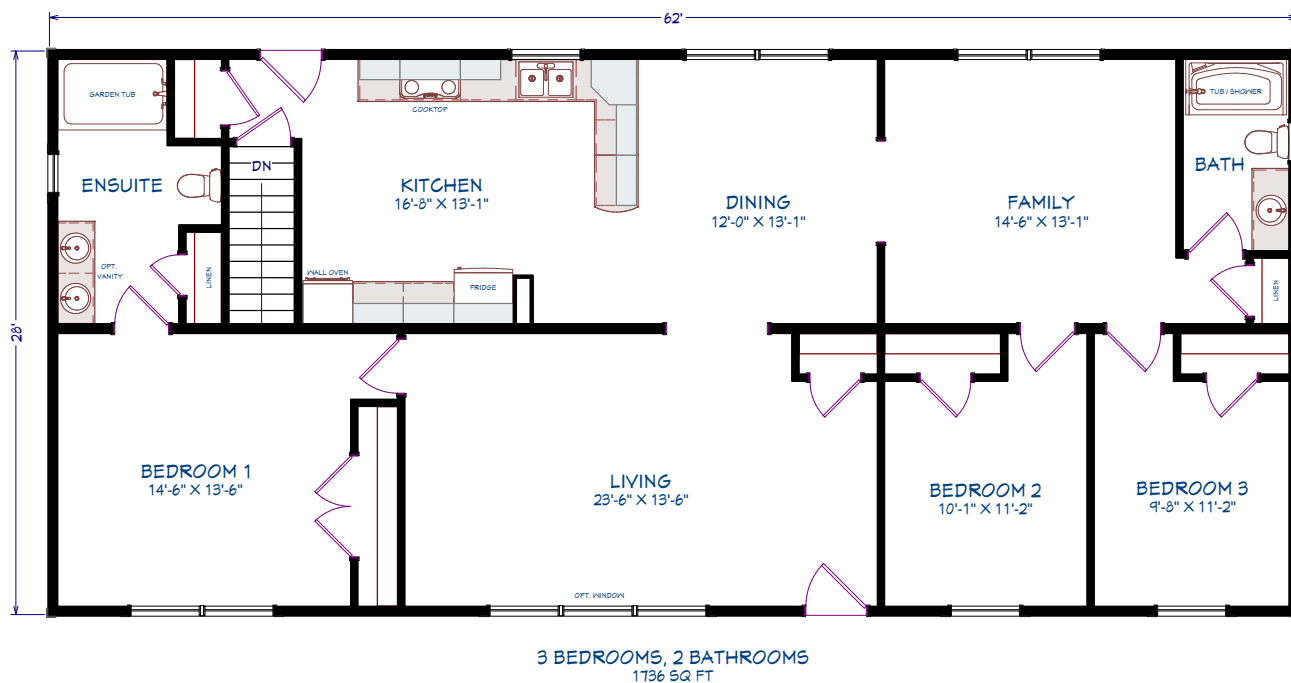
BUNGALOW / RANCH



3 BEDROOMS  
2 BATHROOMS  
1,736 SQUARE FEET  
62' x 28' DIMENSIONS

## OPTIONS

- Large dormer
- Eyebrow roof
- Dustpan roof
- Front door ¾ glass
- Mulled living room window
- Upper window grills
- 5 ½" Window trim
- Shake vinyl siding
- Extra coach light
- Appliances

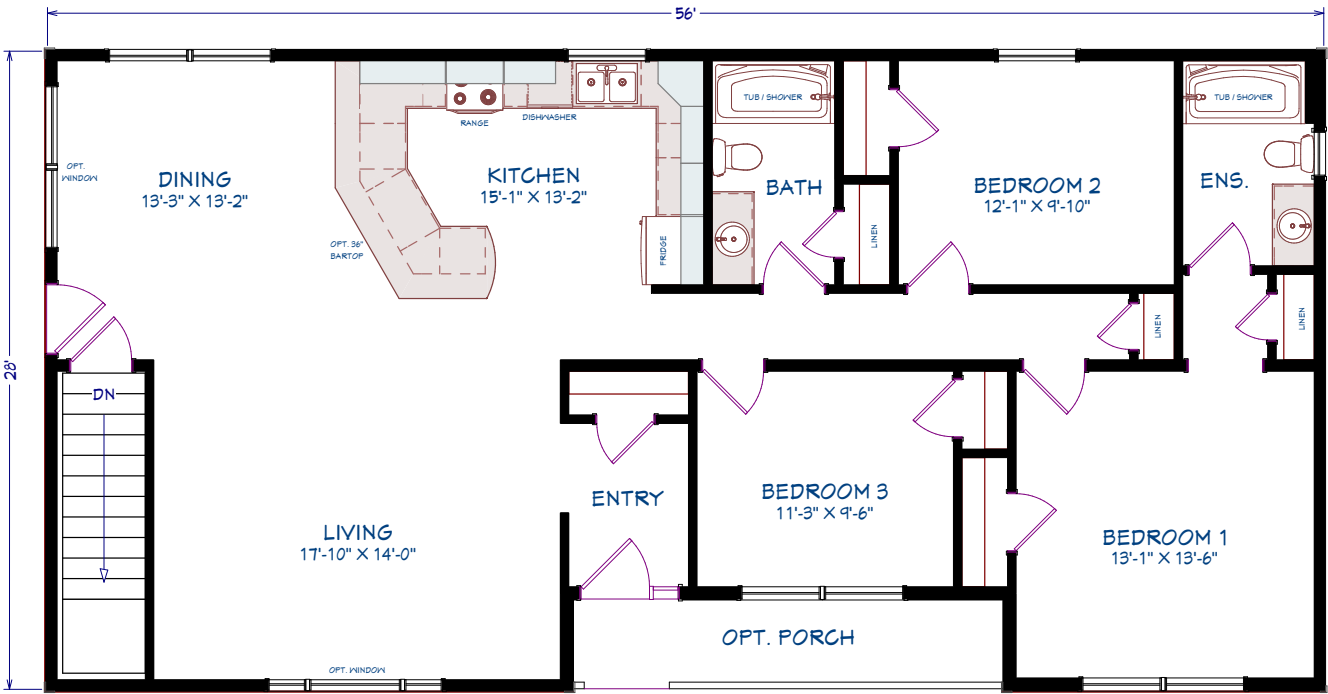


ML212  
BUNGALOW / RANCH



3 BEDROOMS  
2 BATHROOMS  
1,492 SQUARE FEET  
56' x 28'24' DIMENSIONS

- OPTIONS
- Large dormer
  - Gable vent
  - Porch
  - Front door sidelight
  - Living room picture window
  - Second dining room window
  - Window and door colour
  - Window pediments
  - Stone vinyl siding
  - Coloured siding accessories
  - Appliances



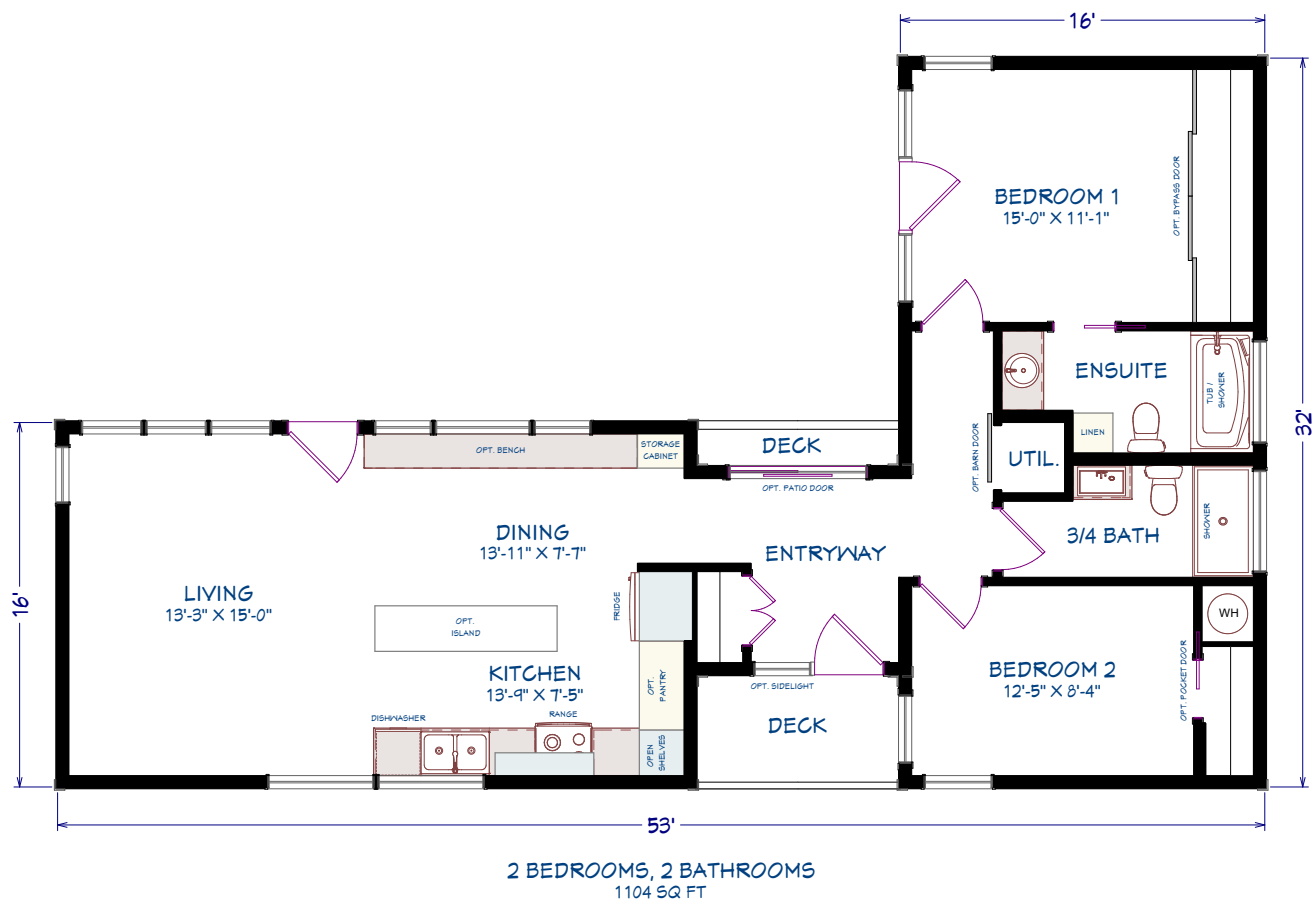
3 BEDROOMS, 2 BATHROOMS  
1492 SQ FT

OASIS  
BUNGALOW / RANCH

1,104 SQUARE FEET  
2 BEDROOMS  
2 BATHROOMS

OPTIONS  
Kitchen island  
Bench  
Pantry  
Oversized windows

Decks  
Optional doors  
Stone vinyl siding  
Appliances





# WELCOME HOME

All Maple Leaf Home interiors are designed to your exact specifications. Built the way you want it, from flooring to appliances.

MAPLE LEAF  HOMES



# MAPLE LEAF HOMES

You have the option of choosing from our large selection of some of the best designs in the industry or, if you have your own plans, we can work with you to build your home, your way.

Once you choose the floor plan you like, you get to pick your options. There are hundreds of options to choose from, everything from the colour of your siding to the hardware on your kitchen cabinets. We will build your home, your way.

To start designing your new home, visit our website at [www.mapleleafhomes.ca](http://www.mapleleafhomes.ca) to find a retailer in your area.



## MAPLE LEAF HOMES

655 Wilsey Road  
Fredericton, NB  
Canada, E3B 7K3

**Tel:** 506 459 1335  
**Email:** [hello@mlhomes.ca](mailto:hello@mlhomes.ca)

**NOTE** Maple Leaf Homes reserve the right to make changes to this brochure without prior notice and without incurring any obligations to any previous, present or future customers as the result of any changes made.